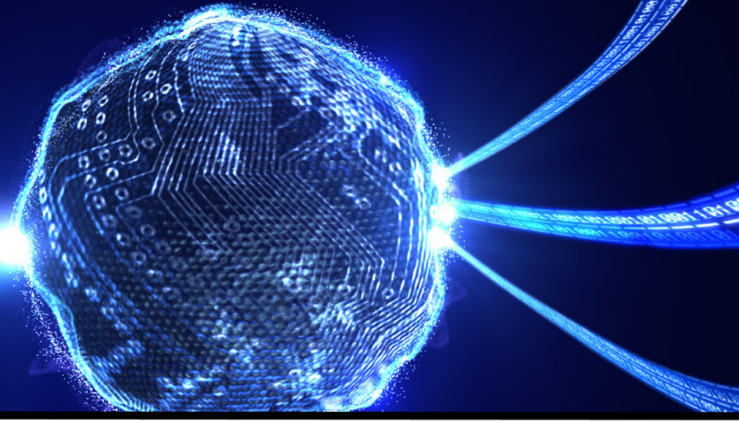


SEMANTIC DAYS

20TH-21ST MAY 2014

AT RADISSON BLU ATLANTIC HOTEL STAVANGER



conference programme day 1

- 09.00: Welcome, Dr. Kari Anne Haaland Thorsen, EPIM
09.10: Digitalization in Statoil, CIO Sonja Chirico Indrebø, Statoil
09.40: ISO 15926 Working Smart Together, Solution Architect Glen Worrall, Bentley Systems
10.10: Coffee Break
10.30: Integrated Operations on NCS, Director Øyvind Mydland, StepChange
11.00: Global organizations have focus on Reference Data
CEO Ray Topping, Fiatch
CEO Alan Johnston, MIMOSA
CEO Thomas J. Burke, OPC Foundations
CEO Nils Sandsmark, PCA
12.00: Lunch

PARALLEL SESSIONS

Big Data and Semantics

Chair: Dr. Kari Anne Haaland Thorsen, EPIM

- 13.00: A Pragmatic approach to Enterprise Architecture, Enterprise Architect Jan Eivind Danielsen, Bouvet
13.30: Optique: Scalable End-user Access to Big Data, Martin G. Skjæveland, University of Oslo
13.50: Semantic Technologies in three Big Data use-cases, Chief Architect Dr. M. Naci Akkøk, Oracle Nordic
14.10: Enabling a Semantic Ecosystem for O&G: An Alliance of SPARQL and ISO 15926, CTO Ralph Hodgson, TopQuadrant
14.30: Coffee break
15.00: Using semantic technology in EPIM EnvironmentHub, Chief Architect Morten Forfang, Computas
15.20: Graph Theoretic Semantic Analysis, Chief Scientist Analysis Robert Lojek, IBM Global Services
15.40: DaPaaS – A Data- and Platform-as-a-Service Approach to Efficient Data Publication and Consumption, Senior Research Scientist Dumitru Roman,

16.00: Sponsors/Exhibitions

18.00: Networking

19.00: Conference dinner

Integrated Operations

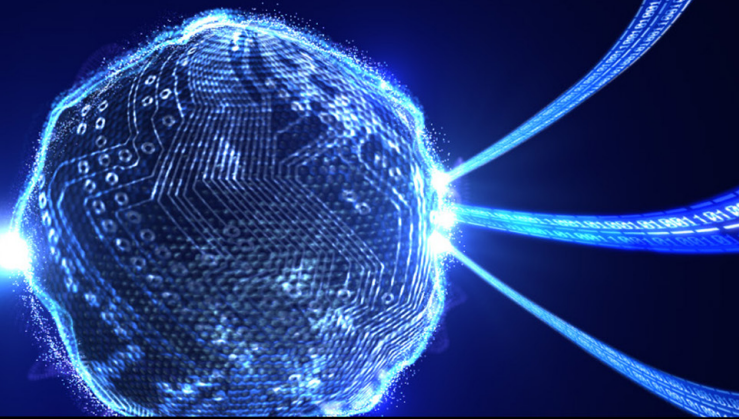
Chair: Director Øyvind Mydland, StepChange

- 13.00: IO and Man- Technology-Organization (MTO), Principal Research Scientist Asgeir Drøivoldsmo, IFE
13.30: Real-time interoperability with OPC UA Semantics, CEO Espen Krogh, Predictor
13.50: Environmental Monitoring, Product Architect Arne Wiklund, Kongsberg Oil & Gas
14.10: IO in Drilling Operations, Manager Inge Svensson, Baker Hughes
14.30: Coffee Break
15.00: Production - the meaning of meaning, Lead System Consultant Magnus Svensson, DONG E&P Norway
15.20: Semantic Interoperability Reasoning for Process Design Data, Diplom-Informatiker Michael Wiedau, RWTH Aachen University, Germany
15.40: Real time data and Semantic Technology, Head of Production Development, Graham Moore, Bouvet

SEMANTIC DAYS

20TH-21ST MAY 2014

AT RADISSON BLU STAVANGER
ATLANTIC HOTEL



conference programme day 2

Asset Planning and Logistics

Chair: Manager Robert A. Skaar, Statoil

08.30: Welcome, Manager Robert A. Skaar, Statoil

08.45: Integrated Lifecycle Asset Planning, Team Leader Frode Torsvik, Statoil

09.15: Offshore logistics, Manager Logistics Eric A. Hauge, Statoil

09.45: GIM - data integration within and across planning and logistics,
Technical Adviser Tore R. Christiansen, PCA

10.15: Coffee Break

PARALLEL SESSIONS

Asset Planning

Chair: Manager Robert A. Skaar, Statoil

11.00: HSE and planning,
Manager Bjørn Thomas Bache, PSAN

11.30: Overruns and planning, Manager Kalmar Ildstad,
NPD

12.00: Lunch

Chair: Manager Thore Langeland, EPIM

13.00: Integrated Lifecycle Asset Planning (ILAP),
Adviser Hans van der Burg, ENI

13.30: High Quality Planning,
Professor Per Willy Hetland, BI

13.50: Safran's adapter to ILAP,
Developer Lars Messel, Safran

14.10: Visualization of ILAP Data, Product Manager Erik
Danielsson, Promineo

14.30: Coffee break

15.00: Planning in Edward Grieg, Adviser Oddvar
Ringheim, Lundin

15.20: Linking data without common identifiers,
Consultant Lars Marius Garshol, Bouvet

15.40: Looking ahead

Logistics

Chair: Manager Marit Bjordal, EPIM

11.00: Controlling Logistics Operations, Supply Base Team
Lead Thomas Røed, Talisman Energy

11.30: Information Systems in Logistics, Associate Professor
Bjørn Jæger, Molde University College

12.00: Lunch

Chair: Manager Marit Bjordal, EPIM

13.00: EPIM LogisticsHub, Project Manager Marit Bjordal,
EPIM/ Senior Knowledge Engineer Lotta Nordling,
Computas

13.30: Using EPCIS standard to integrate the logistics chain,
Business Development Manager Knut Vala, GS1.

13.50: Using ISO 15926 and W3C to integrate the logistics
chain, Technical Adviser Tore R. Christiansen, PCA

14.10: Tracking of CCUs, Commercial Manager Chris Hook,
Swire Oilfield Services

14.30: Coffee Break

15.00: RFID-technology for tracking, Global General
Manager Frank Wehus, Identec Solutions

15.20: Tracing goods on land, Stig Henning Øybakken, Bring

15.40: Looking ahead