

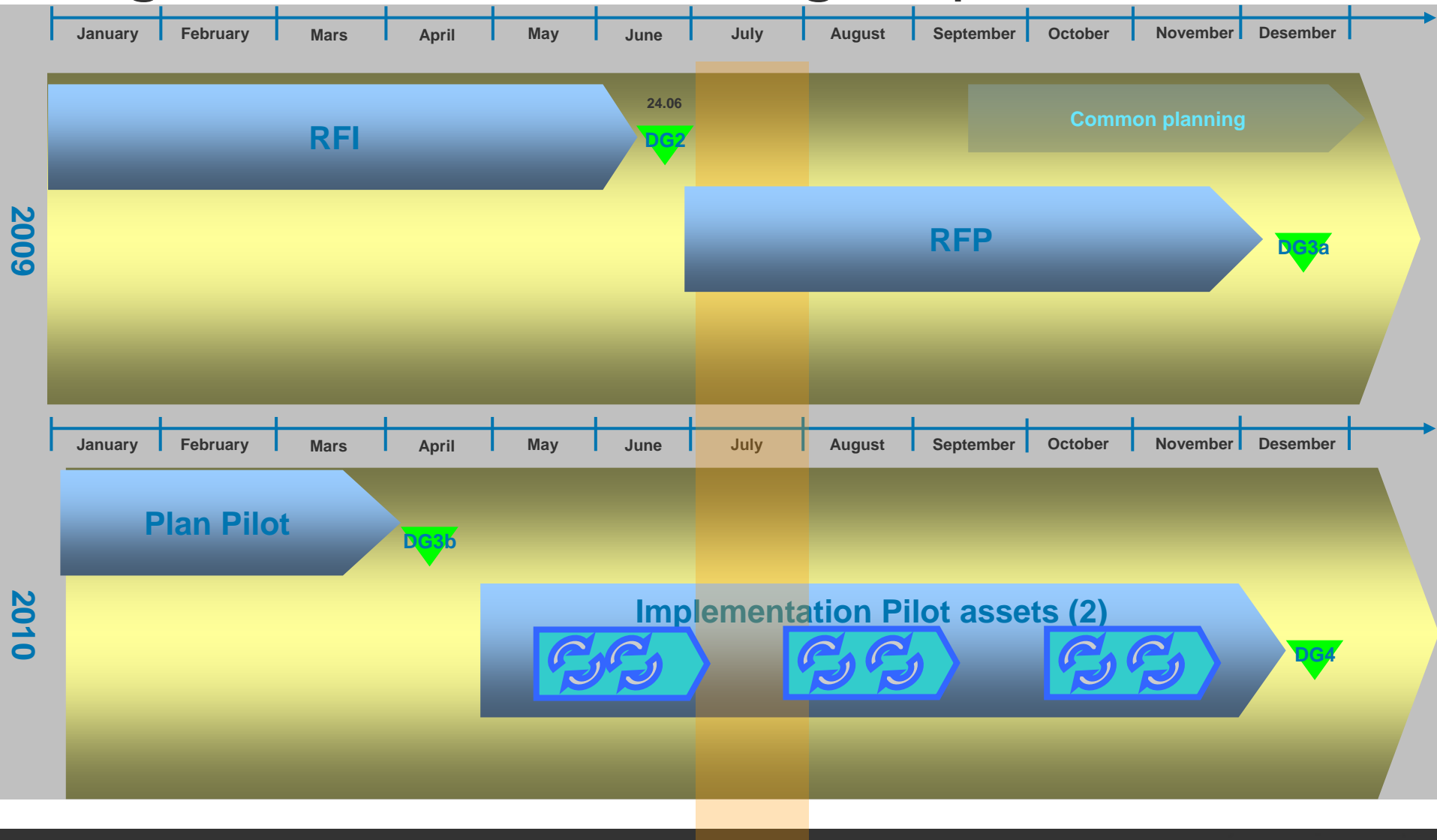
The RTV solution

The vision and concept

Bjørn Rugland, product owner



High Level Plan Including MapIT



RTV VISION

Real-Time Visualization for production and process engineers (RTV).
Allowing people to work and share knowledge, seamlessly and without borders on the same real time production data.

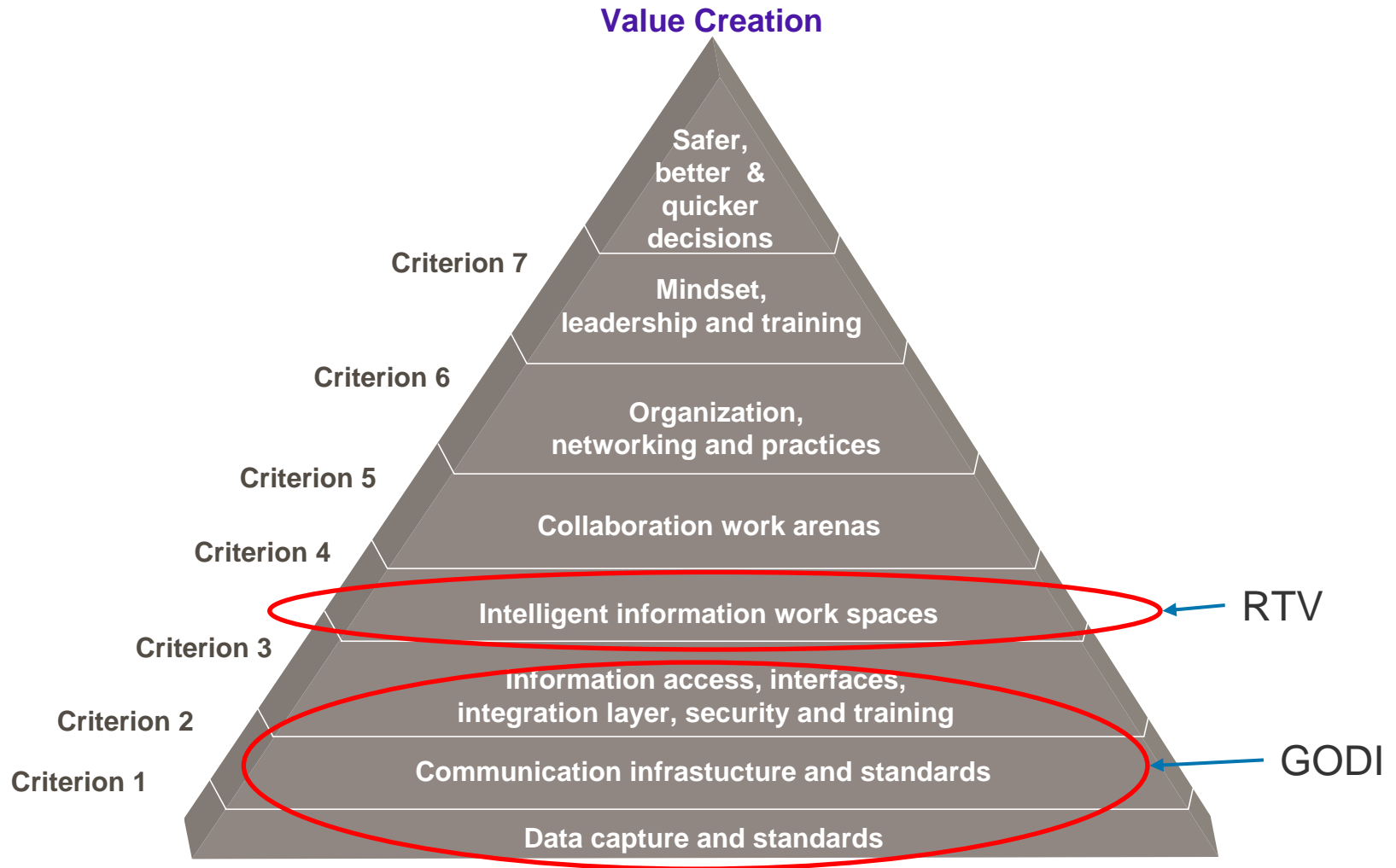
Scope RTV Solution

- Multidisciplinary collaboration tool in the production domain. Primary users will be the disciplines production technology, operations working within the production optimisation processes and CCR personnel.
- Onshore/offshore
- Real-time / right-time data
- Production optimisation
- Supporting work processes
- Main standardised corporate tool in the production domain.
- Implementation on Statoil operated licences at the Norwegian Continental Shelf (NCS). International licences as applicable.
- Interface several discipline-specific expert systems.

The RTV solution's Essential Functionality

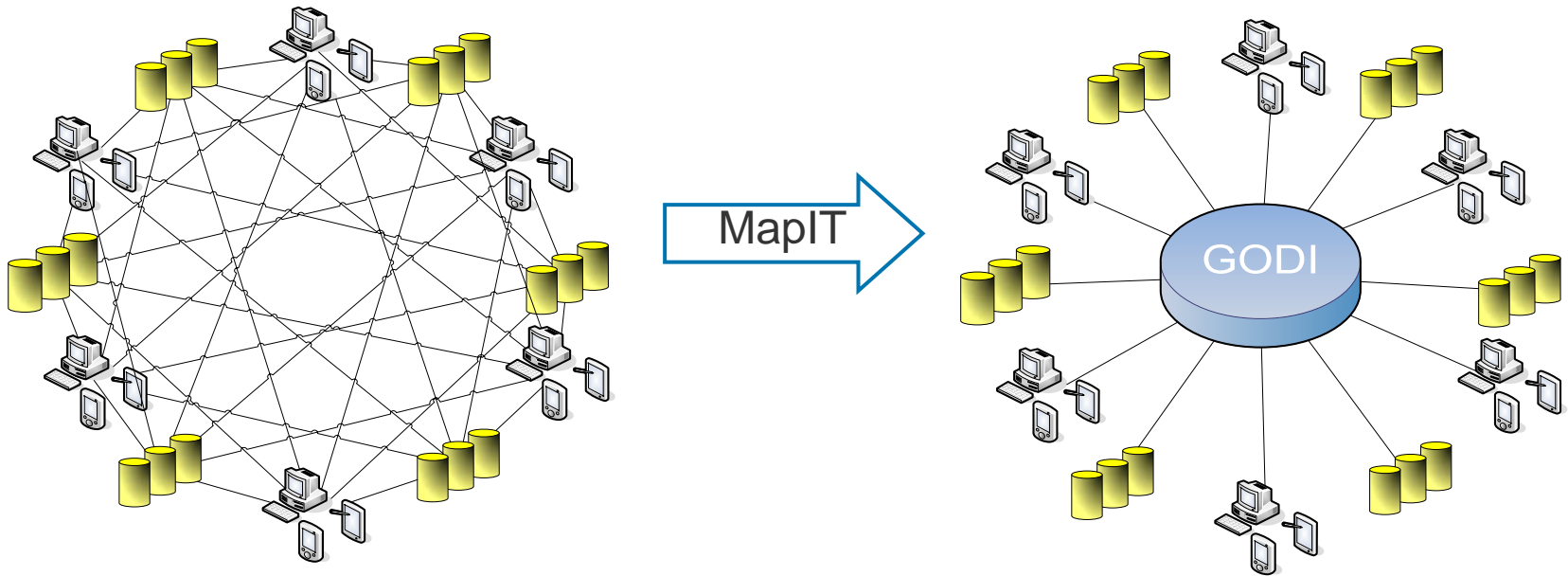
- Support detailed production monitoring and optimisation (DPO)
 - provide well and process surveillance
- Support production optimisation (POG)
 - Support daily production optimisation by fetching and displaying actual/planned field/well production. Provide a task management functionality for defining and to follow up of agreed tasks
- A flexible solution that enables users to configure and maintain work spaces on their own

The IO Guideline – a necessary and sufficient list of criteria



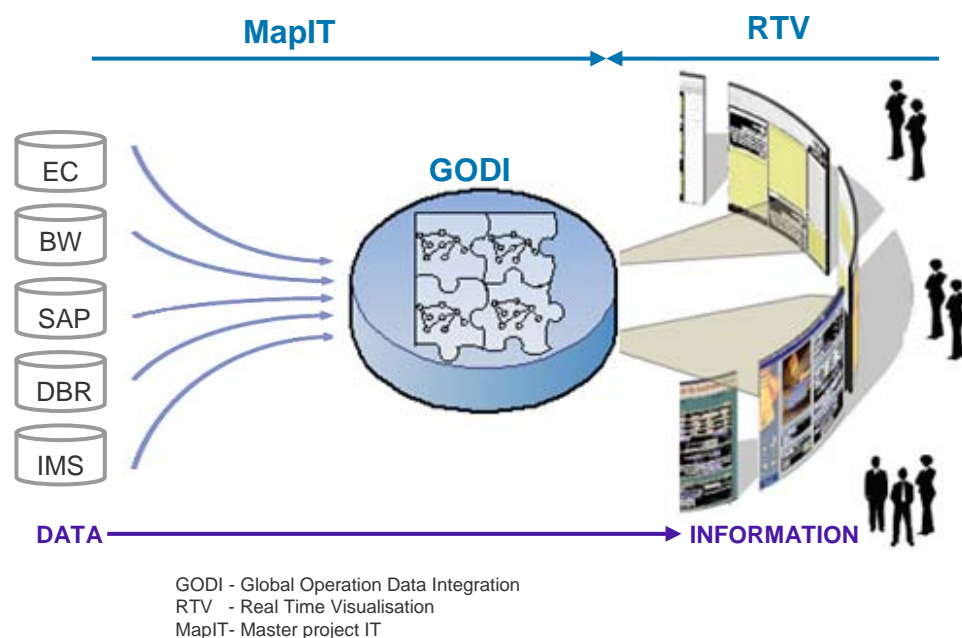
As-is and to-be

- From point-to-point integration to GODI-integration

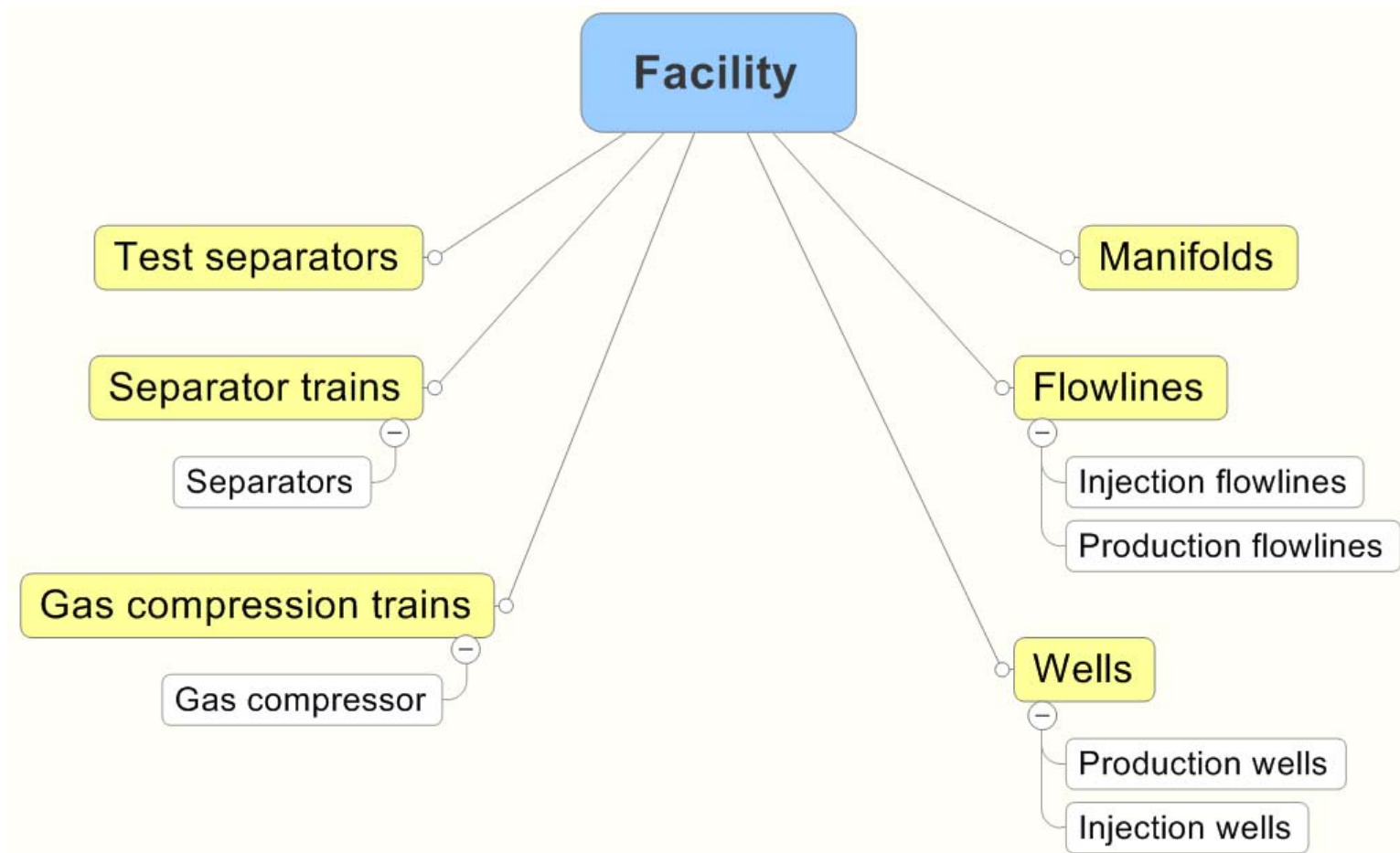


Business Drivers RTV - MapIT

- The MapIT project will deliver standardised data access independent of data source technology to any data subscriber
- The RTV project will deliver information work spaces for data visualisation and collaboration to Petec and OMM
- The two projects will deliver:
 - Standardised information to support safer, better and faster decisions
 - Standard visualisation and collaboration across assets
 - Enablers for creative and innovative user IT-tools



Main equipment to be included (conceptually)



RTV Empowered by Intuition

Asset Handling

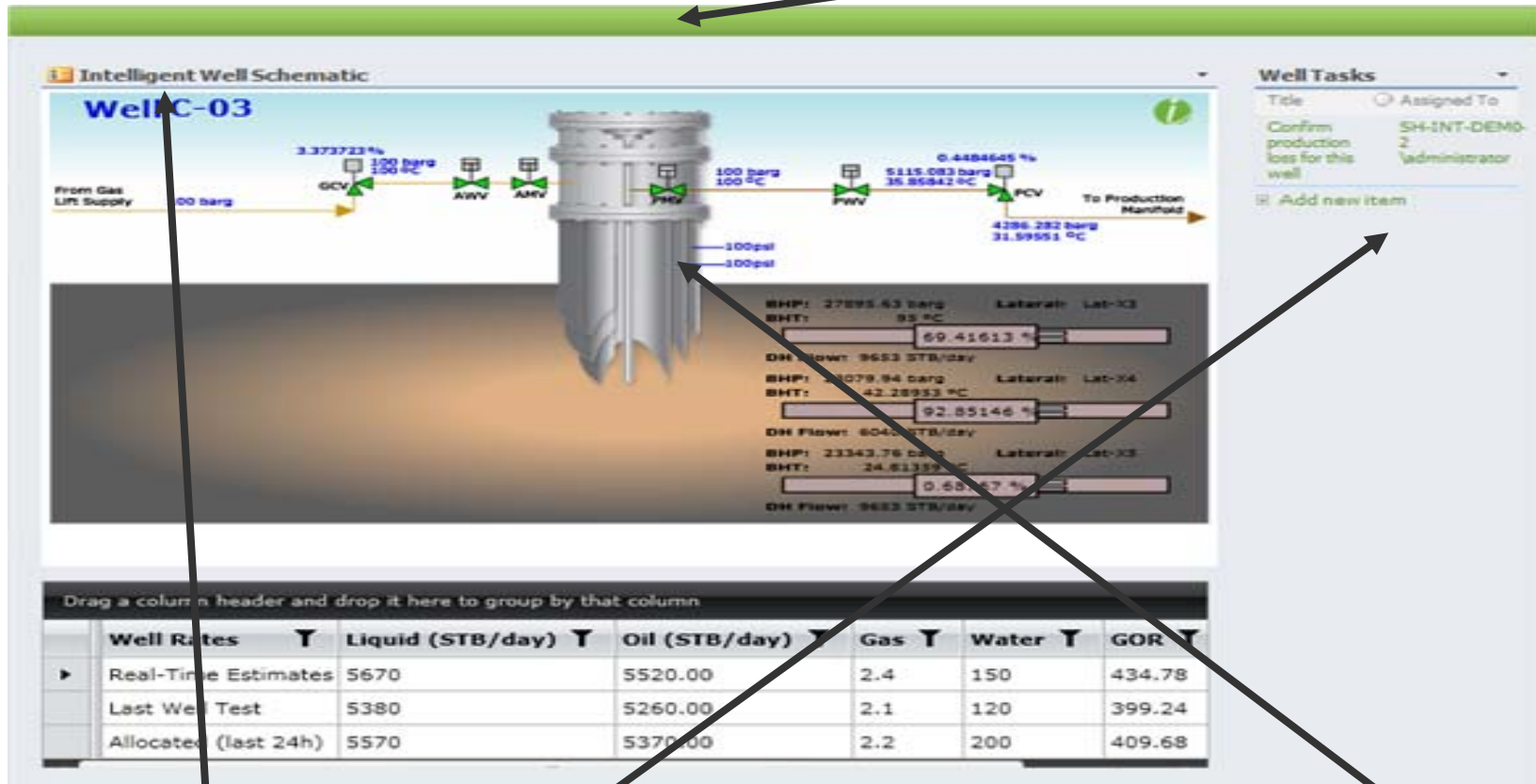
Cross Asset Analysis

Process

Well Specific

Meeting Support

Task and Knowledge Management



Graph tool

Template Workspace

Collaboration Journal

Task mngt

Calculation Engine

Alerts

Reports

Search

Corporate info

Drawing Tool

Virtual Information Library

RTV Empowered by Intuition

Asset Handling

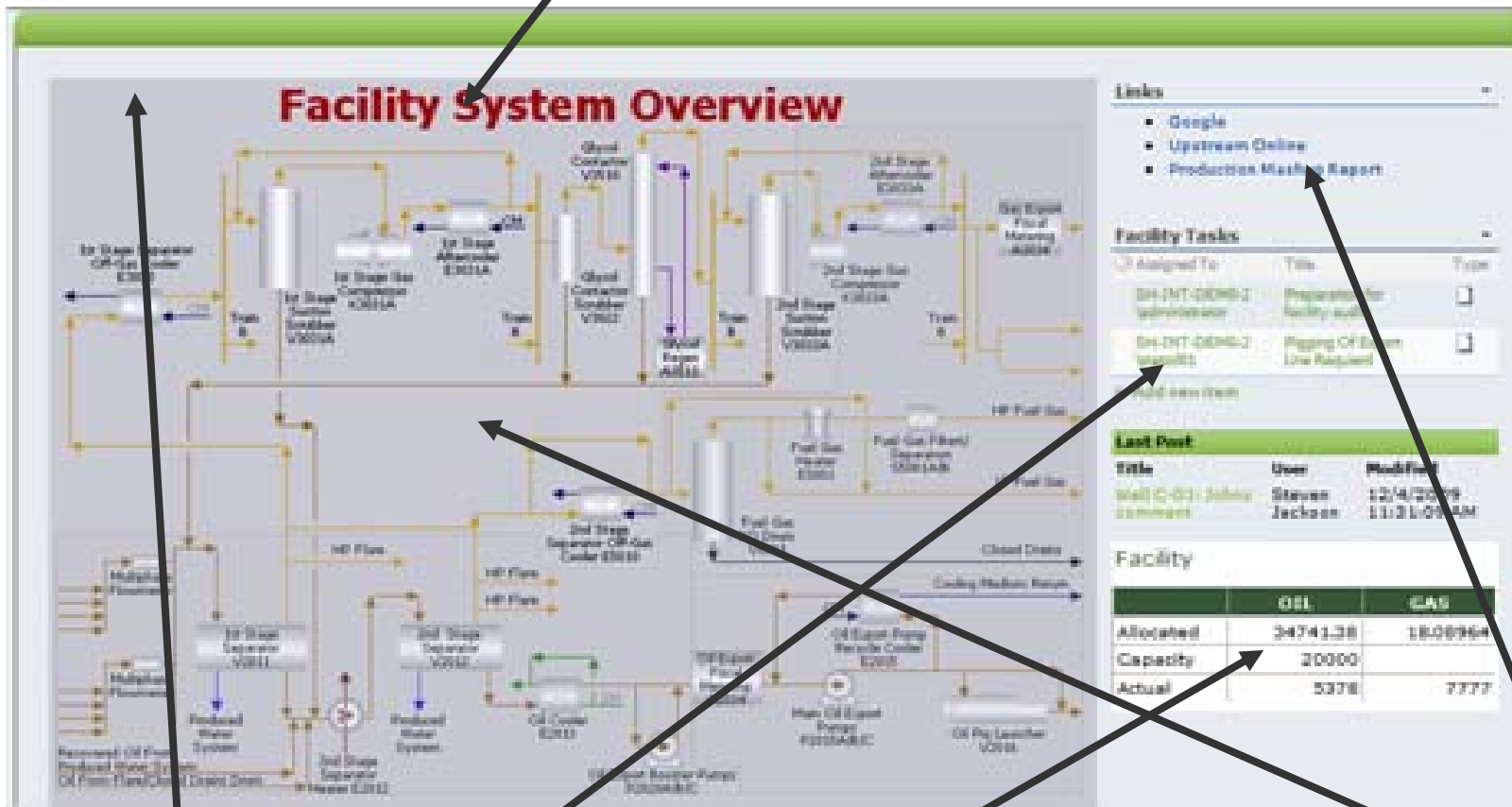
Cross Asset Analysis

Process

Well Specific

Meeting Support

Task and Knowledge Management



Graph tool

Template Workspace

Collaboration Journal

Task mngt

Calculation Engine

Alerts

Reports

Search

Corporate info

Drawing Tool

Virtual Information Library

Summary

- Improved functionality, collaboration and communication. Leading to more effective production surveillance and production optimisation.
- Building for the future and providing cross asset functionality as one standardised solution for SH. (Harmonise with UPN re-org and PSC)
- Standardised solution enable:
 - reduce costs by having a standardised and not fragmented solution in the production domain for visualisation and functionality.
 - standardised solution as a common platform for the whole production domain (operations and subsurface)
 - standard share point functionality and SOA (service oriented architecture) with the GODI layer enabling easy enhancement into adjacent domains
- cross asset functionality for common challenges and benchmarking

[WPM](#)