



**Offset**

Offset Services Limited

# Presentation

**Offset**

Offset Services Limited

# **BROWNFIELD SOLUTIONS**

- 1. As-Built Data Collection from Plant**
- 2. AVEVA NET Portal Support Services**
- 3. Software Solutions for AVEVA NET**



# BROWNFIELD SOLUTIONS

## 1. As-Built Data Collection from Plant



# Project Cockburn (Western Australia) Complete Plant 'As-Built' from Design for AVEVA NET use.



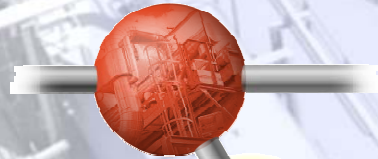
# Work has been carried out for Woodside in Western Australia







# BROWNFIELD ASSET MANAGEMENT.



*Design Data of Plant.*



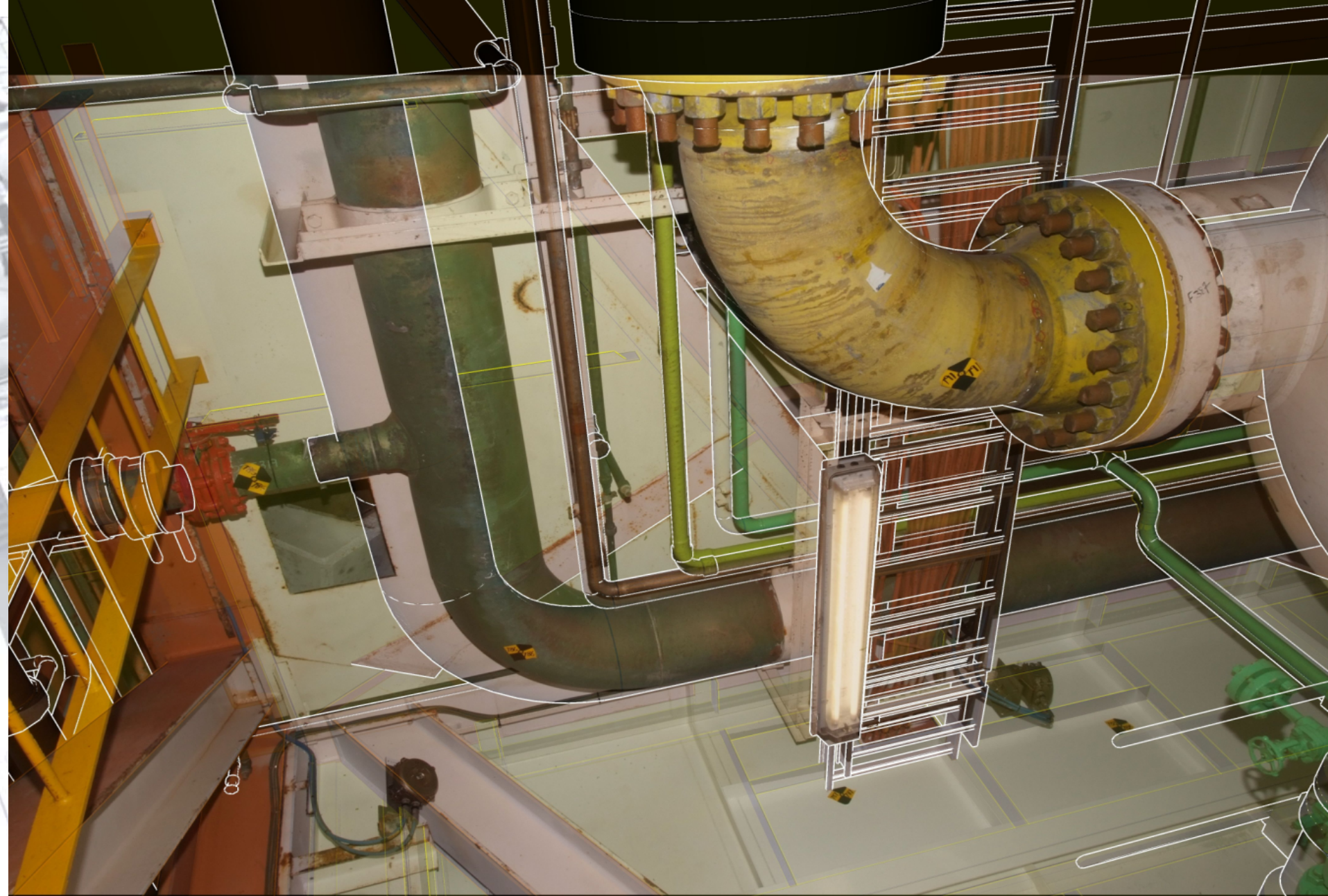
*As-Built Plant Data.*

On All Facilities Design  
Data and As-Built Data is  
Always Different.











# North Rankin 'A'

North Rankin 'A' > ALIS Portal > Portal

## Enterprise Explorer

User adm5yj  
Role VNET User  
 Hide Find  Show Toolbar  
Any type  
Find Mode: By ID

- Module 04
- Module 05
- Module 06
- Module 07
  - As-built 3D Models
  - Index Pages
  - Navigational Photos
  - Photopairs
- Module 08
- Module 09
- Module 10
- Module 11
- Module 12
- Module 13
- Module 14
- Module 15
- Module 16
- Module 17
- Module 18
- Module 19
- Module 20
- Module 21
- Module 22
- Module 39
- Overlay Photo Examples
  - NRA-001r
  - NRA-002r
  - NRA-003r
  - NRA-158r
  - NRA-167r
  - NRA-405r
  - NRA-658r
  - NRA-715r
  - NRA-753r

## Content Explorer

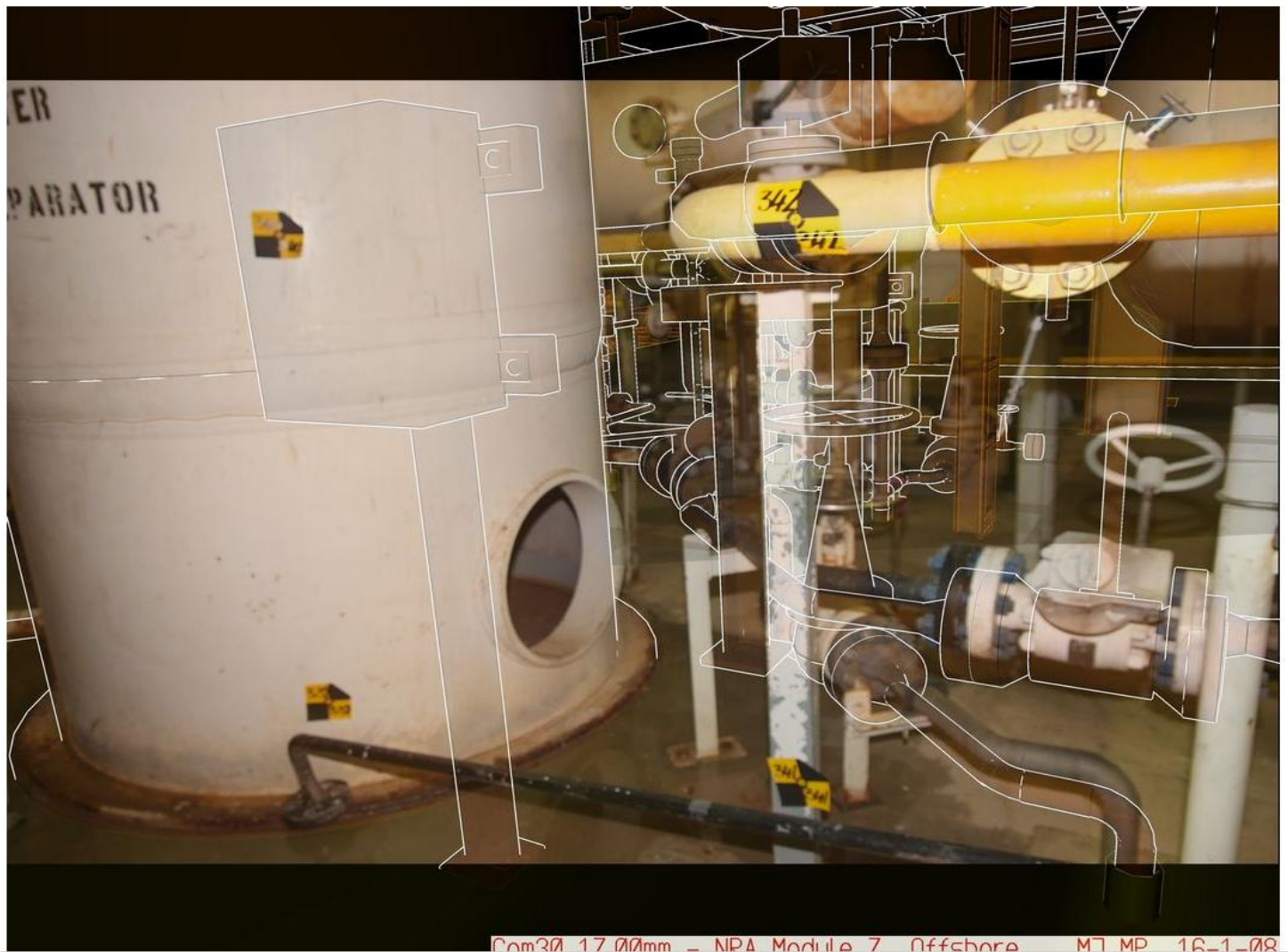
Overlay Photo Example NRA-167r{}

Revisions:

Revision	Notes	Properties
???		

## Content Viewer

- NRA-M7-118L.svg
- AB-07-1008 Index.mht
- NRA-M7-125L.svg
- NRA-M7-211L.svg
- NRA-M7-236L.svg
- AB-07-1009 Index.mht
- NRA-M7-085L.svg
- NRA-753r.jpg
- NRA-757r.jpg
- NRA-715r.jpg



Com30 17 00mm - NRA Module 7 Offshore M7 MP 16-1-08

# Pair Of Images Taken From Site



Com35 28.00mm - KCP Stabiliser1 ML BT 18 Aug 2010



Com35 28.00mm - KCP Stabiliser1 ML BT 18 Aug 2010

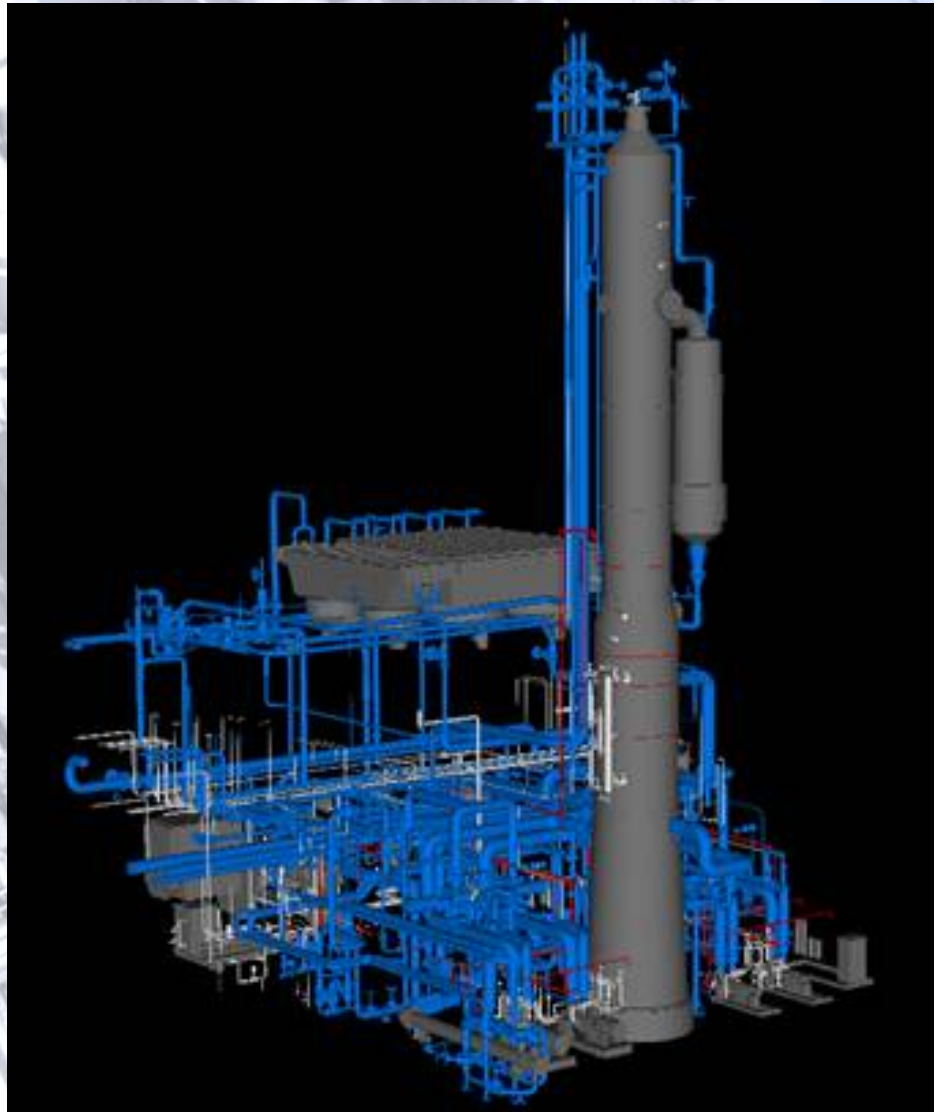
# Magan Jr

*Offset*

Offset Services Limited

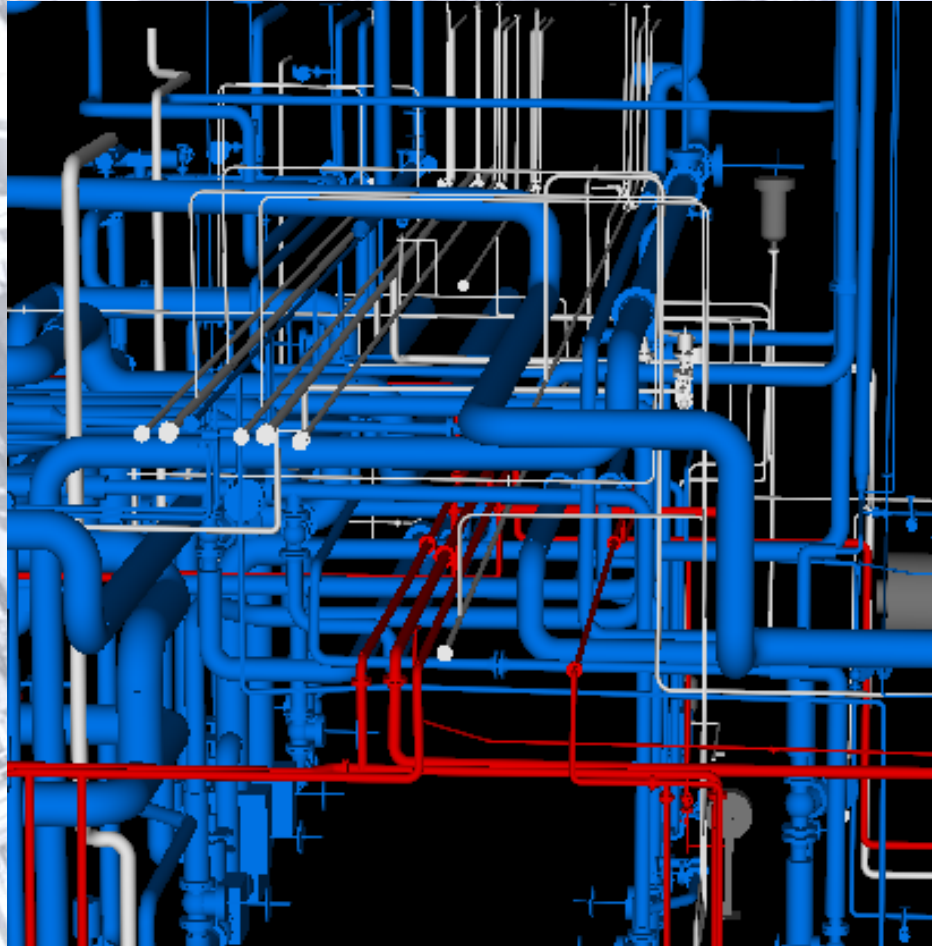
*Offset*

Offset Services Limited



*Offset*

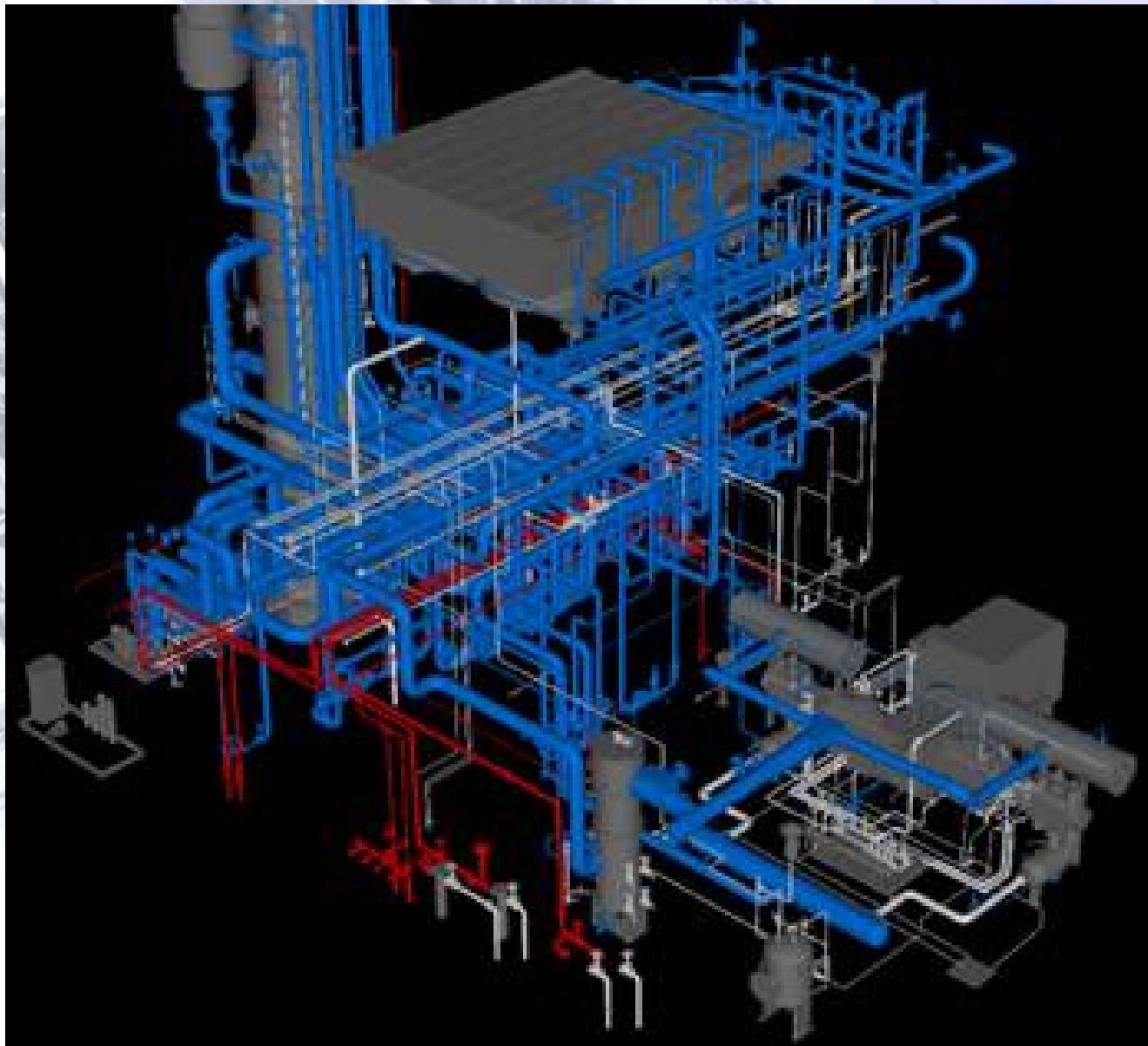
Offset Services Limited



*Offset*

Offset Services Limited



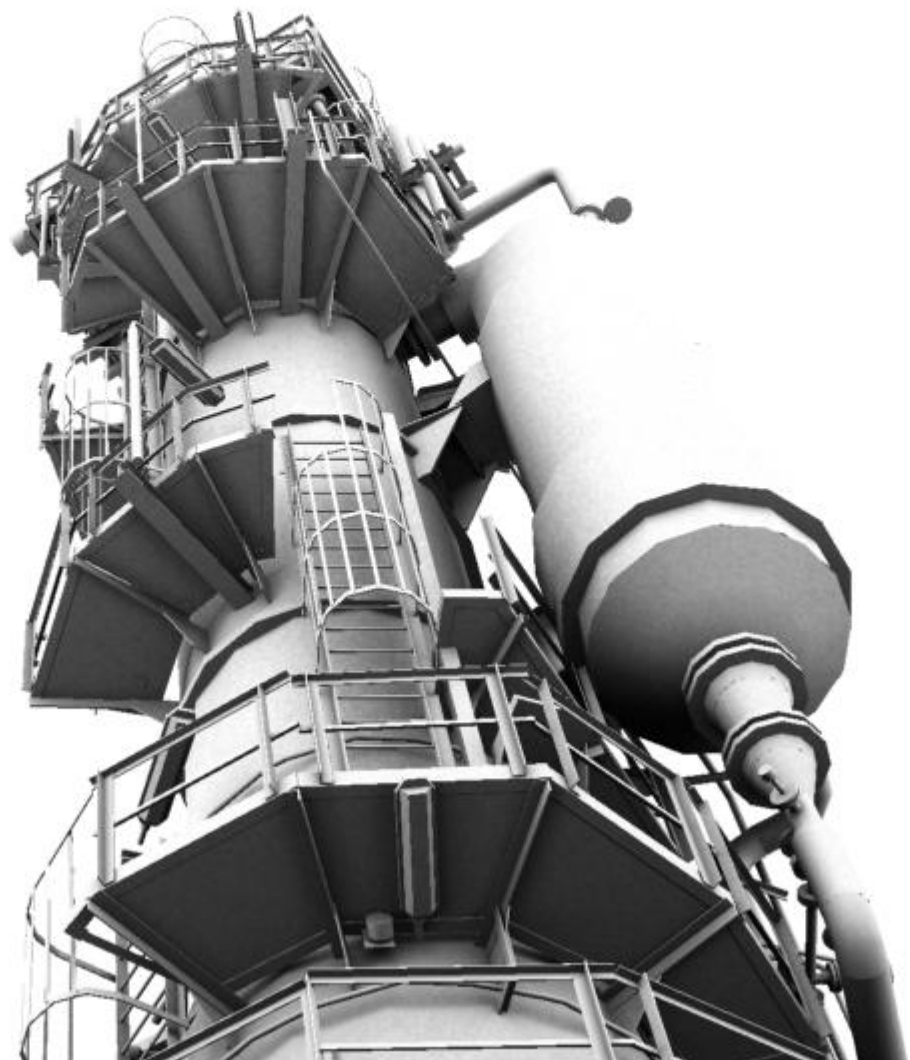


Set

ces Limited



Offset Services Limited

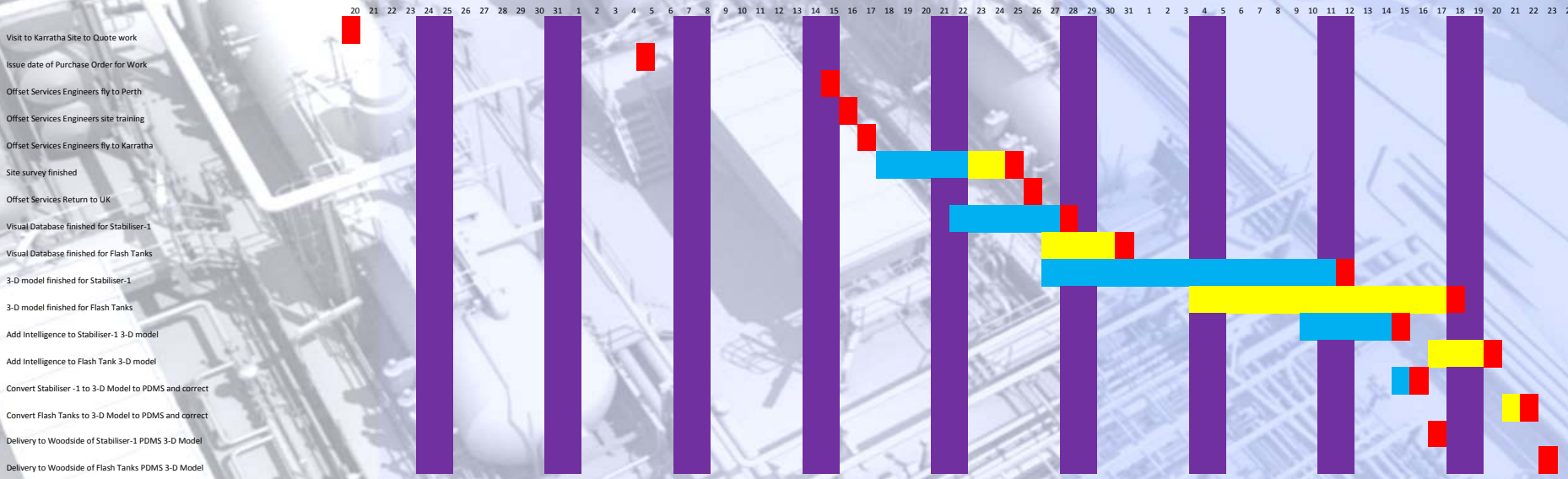


Activity

July

August

September



Total Time for Project = 39 days



# BROWNFIELD SOLUTIONS

## 2. AVEVA NET Portal Support Services

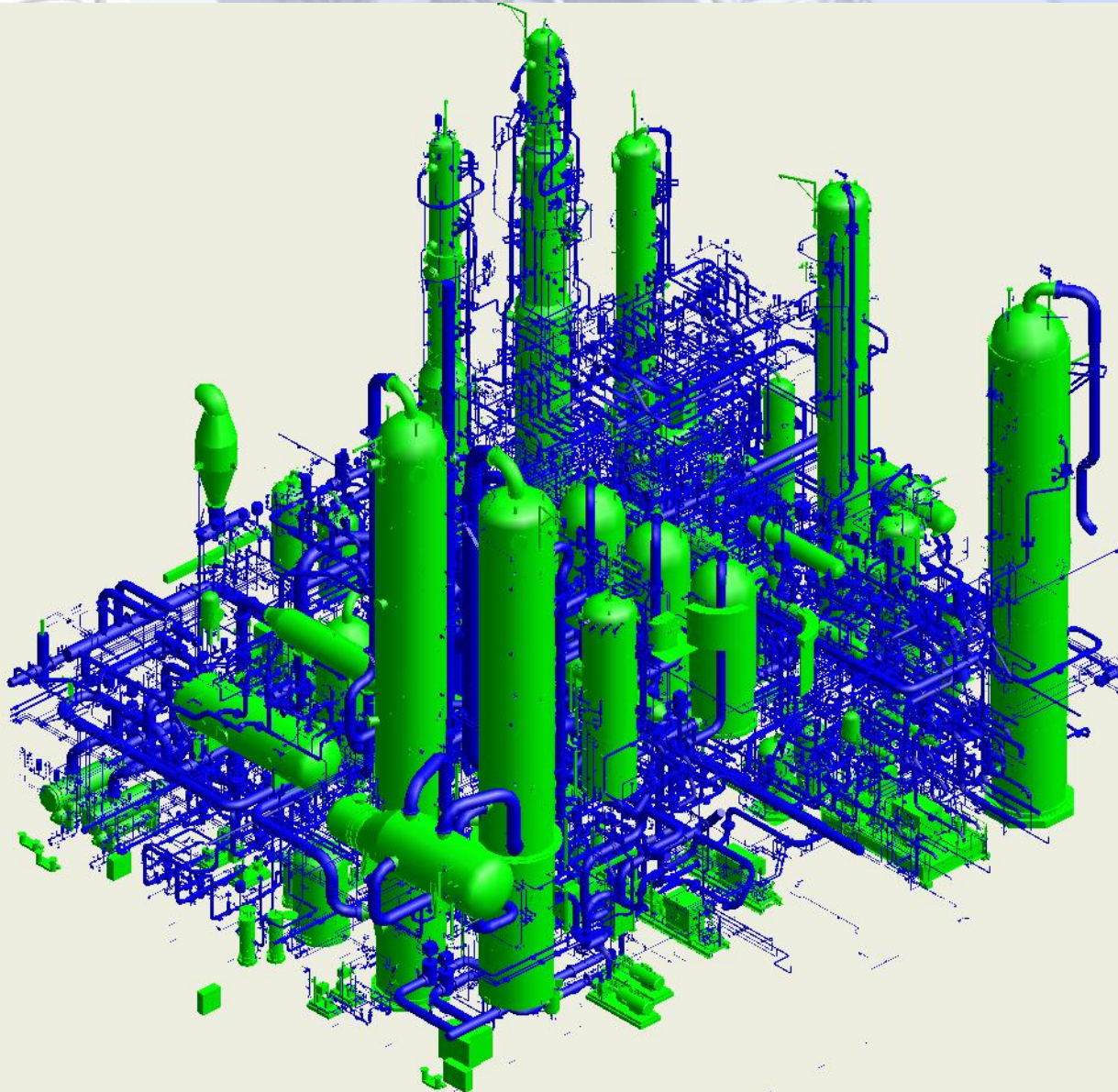


# ALIS Portal Support Services

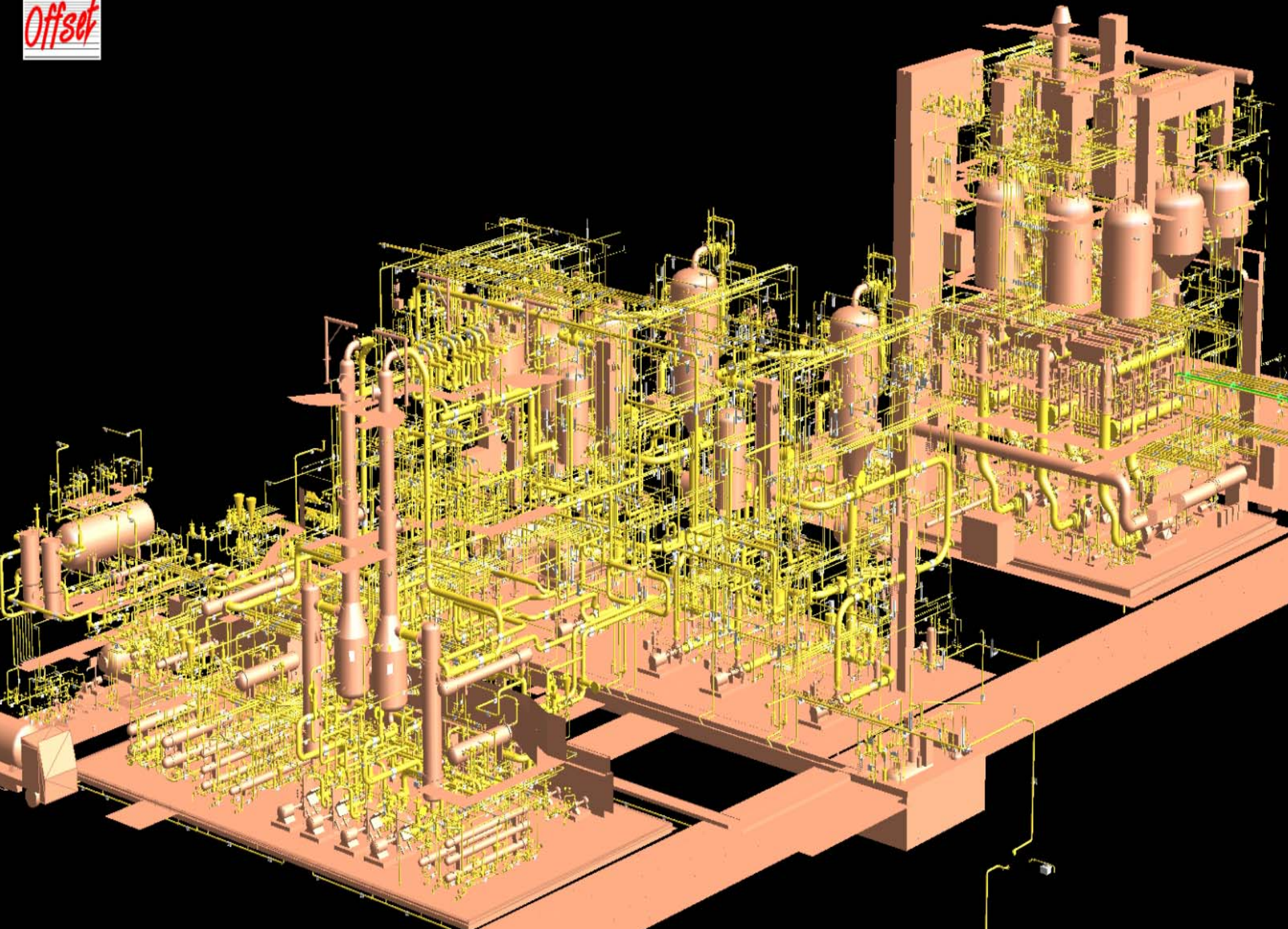
1. Collect all and accurate As Built data for existing Brownfield Plant.
2. Data cleanse existing drawings & documents for ALIS.
3. Populate ALIS. with As-Built Data from any source or cad system.
4. Keep Asset Data Up-Dated as an Out Sourcing Service for Customer

# Area F1

Contains over 6000 pipe branches



*Offset*





# Work on Sub sea Systems.





Modify Shared Page

Enterprise Explorer

User administrator  
 Role Administrator  
 Show Find Show Toolbar

- Functional Facility
- Document Types
- 3D Models
  - AP-2-combine
  - Launcher-VNET
  - Receiver-VNET
  - SSIV-VNET
- Document Folders
- KGP
- NRA

Content Explorer

3D Model AP-2-combine{}

Revisions:

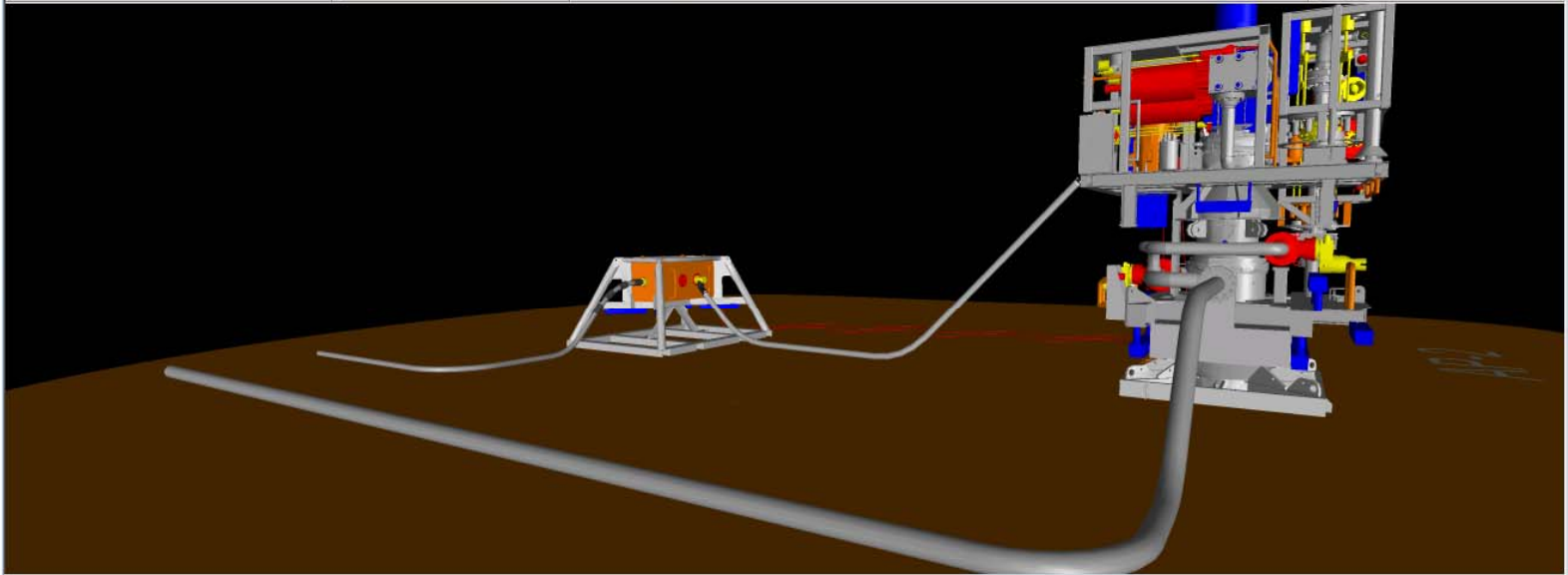
Revision	Notes	Properties
???		

Content Viewer

AP-2-combine.zgl

Edit Navigate View Markup Tools Help

Drag to slide sideways.





Modify Shared Page

Enterprise Explorer

User administrator  
Role Administrator  
Show Find Show Toolbar

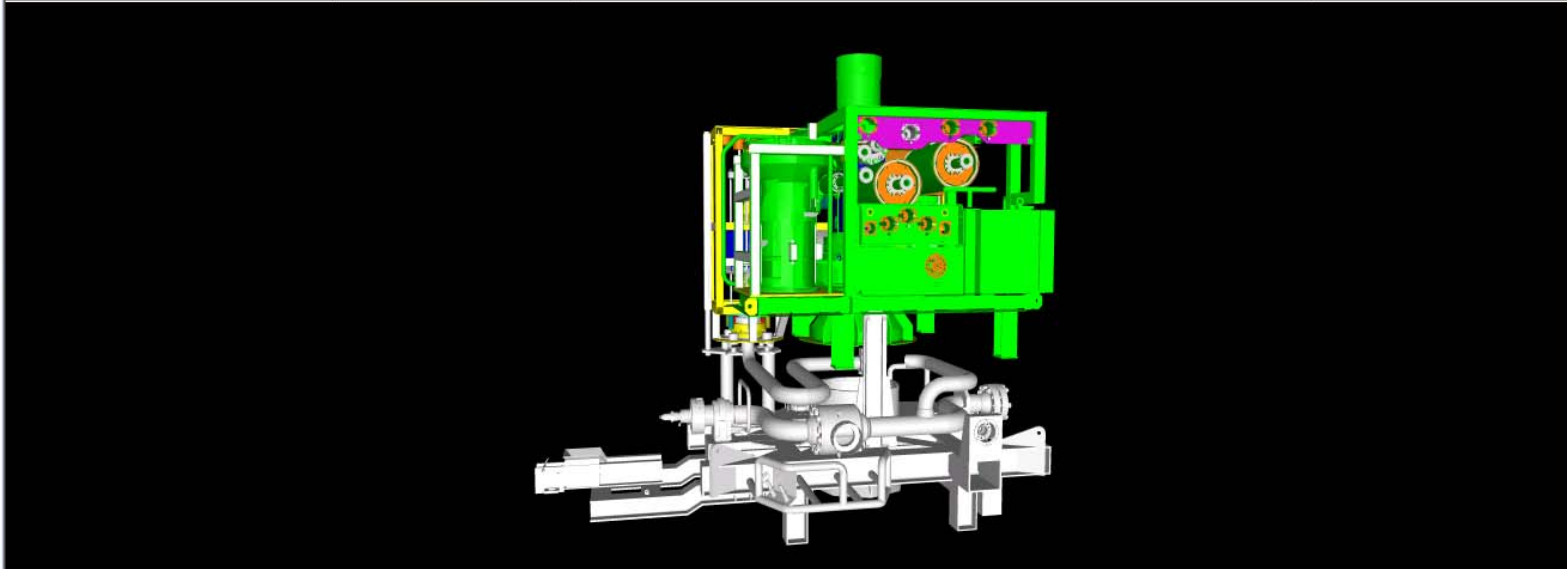
- SWS
- WDS
  - Assets
  - Functional Facility
  - Document Types
  - 3D Models
    - AP2
    - AP3
    - AP4
  - coabis data

Content Viewer

AP2.zgl

Edit Navigate View Markup Tools Help

Click and drag to orbit about center.

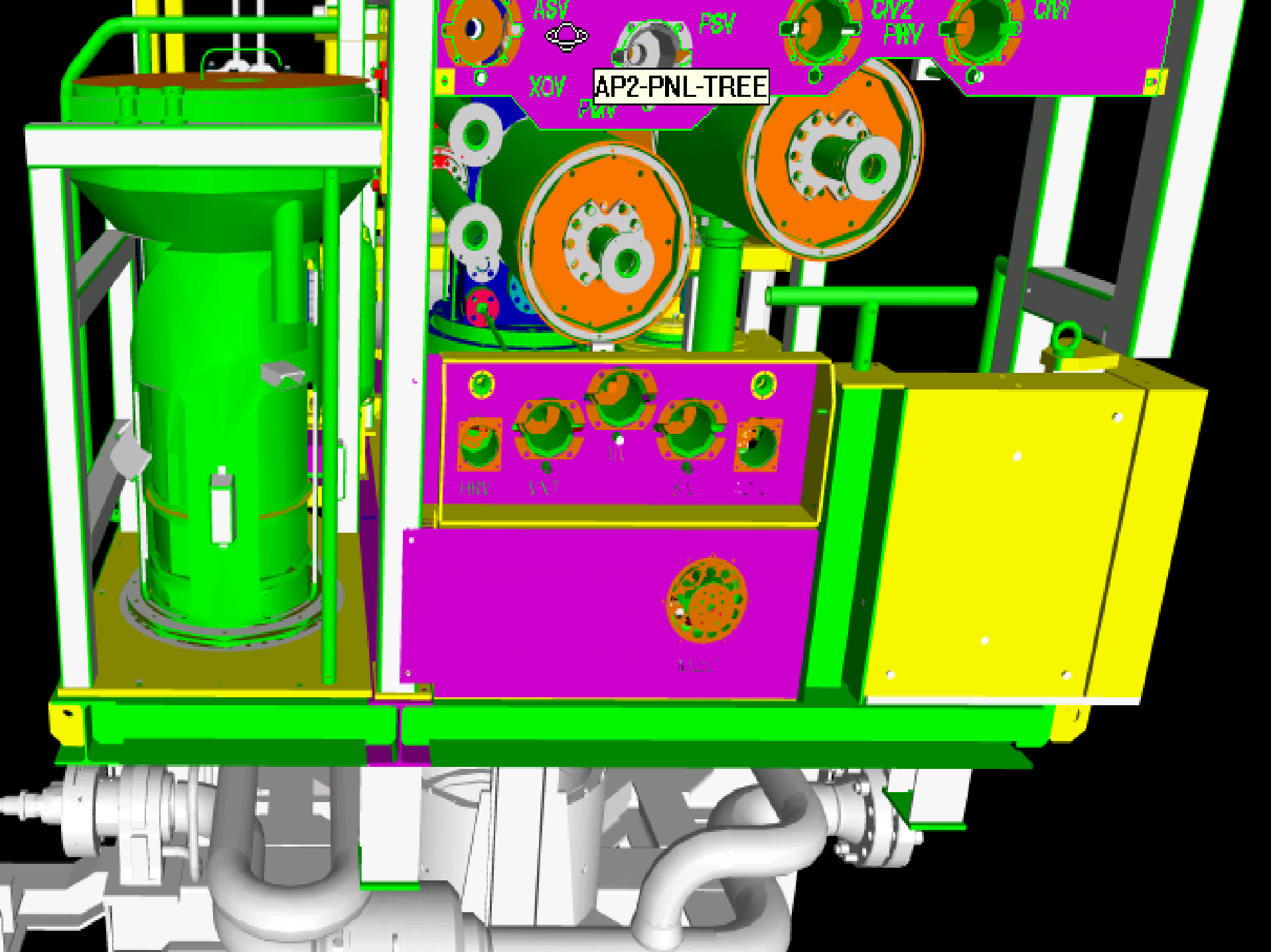


Content Explorer

UNKNOWN AP2-0A-TREE

Documents:

- coabis data - (1)
- sap data - (1)



AP2-PNL-TREE

P1

P2

P3

P4

P1

P2

P1

P2

P3

P4

P5



P1



Modify Shared Page

Enterprise Explorer

User administrator  
 Role Administrator  
 Show Find Show Toolbar

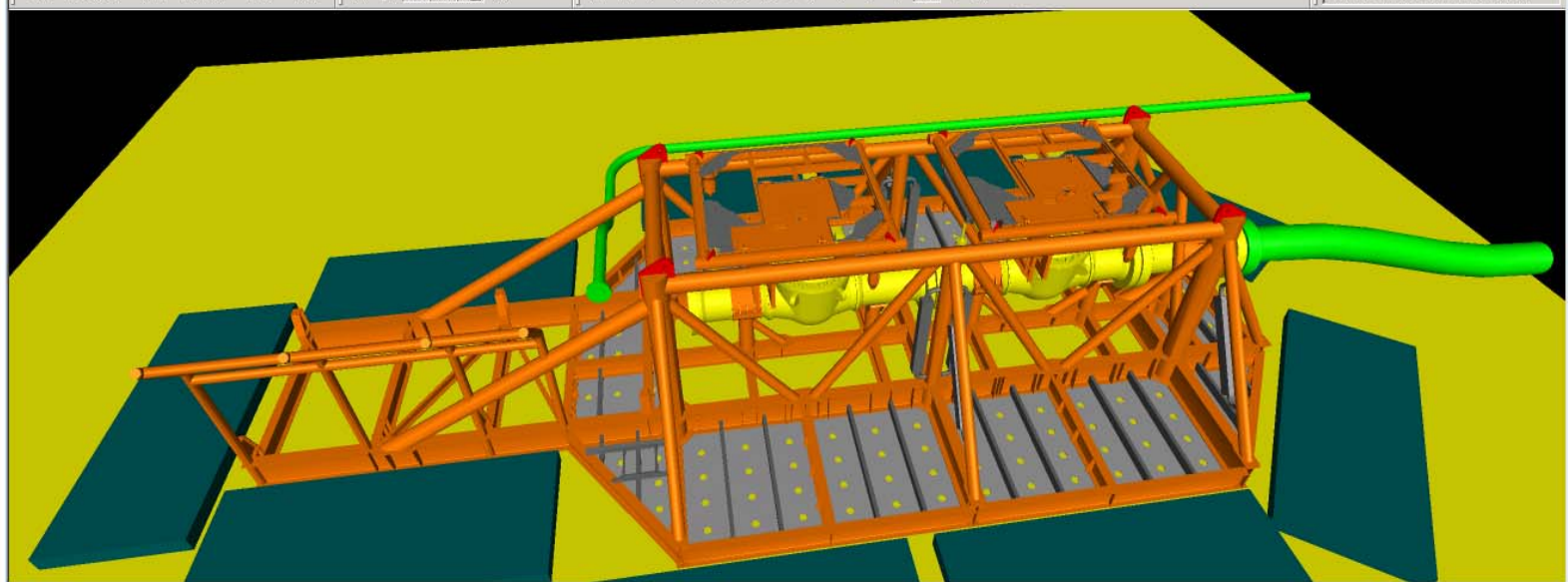
- Functional Facility
- Document Types
- 3D Models
  - AP-2-combine
  - Launcher-VNET
  - Receiver-VNET
  - SSIV-VNET
- Document Folders
- KGP
- NRA

Content Viewer

Receiver-VNET.zgl



Click and drag to orbit about center.



Content Explorer

3D Model Receiver-VNET

Revisions:

Revision	Notes	Properties
???		

# BROWNFIELD SOLUTIONS

## 3. Software Solutions for AVEVA NET



# Magan Gateway for ALIS.





Modify Shared Page

Enterprise Explorer

User administrator  
 Role Administrator  
 Show Find Show Toolbar

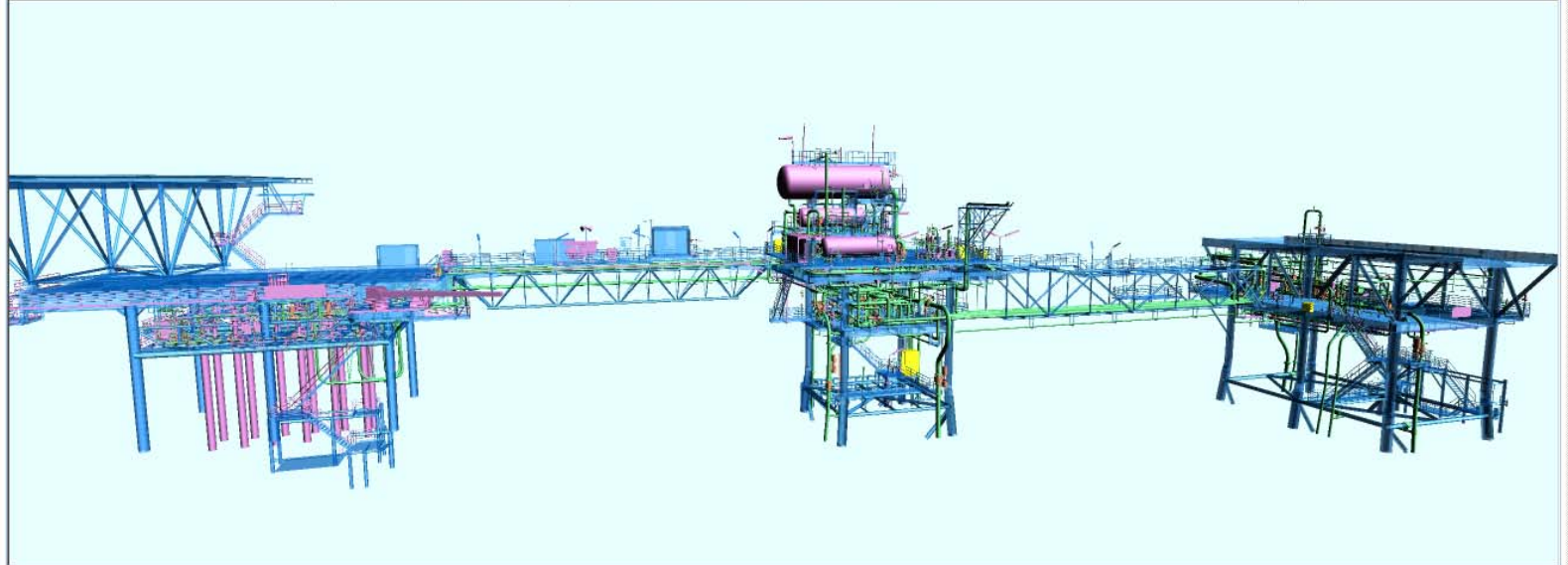
- 3D Models
  - CX3
  - CX3\_PhotoNAV
  - DP
  - DP Survey Navigation
  - DP Survey Photographs
  - DP Survey Photographs v
  - DPTOPP
  - DPTOPP Survey Navigatic

Content Viewer

CX3.zgl

Edit Navigate View Markup Tools Help

Click and drag to orbit about center.



Content Explorer

3D Model CX3{}

Revisions:

Revision	Notes	Properties
???		





Modify Shared Page

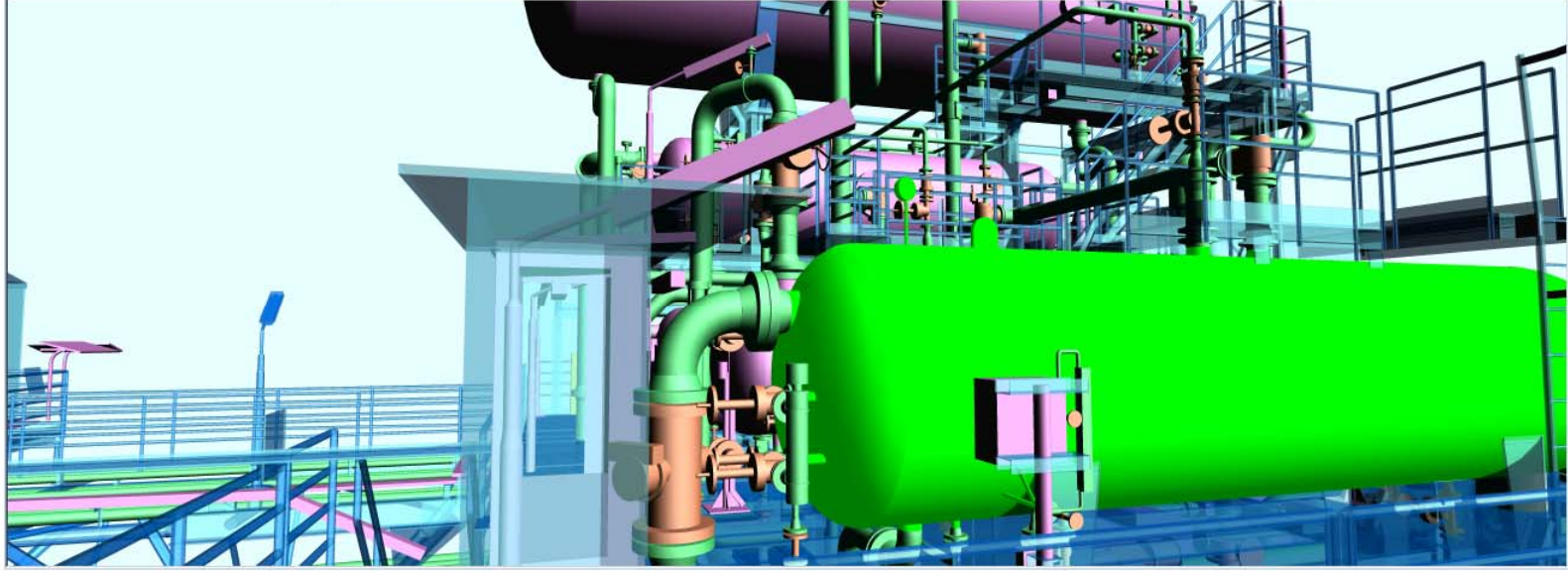
Enterprise Explorer

User administrator  
Role Administrator  
Show Find Show Toolbar

- SWS
- CX3
  - Assets
  - Functional Facility
  - Document Types
  - 3D Models
    - CX3
    - CX3\_PhotoNAV
    - DP
    - DP Survey Navigation

Content Viewer

CX3.zgl  
Edit Navigate View Markup Tools Help  
Click a part to select it.



Content Explorer

Equipment E0-0169

Documents:

- 3D Models - (3)
- Data Sheets - (1)
- Datasets - (1)
- P&IDs - (7)
- Performance Curves - (1)
- Photographs - (53)



Modify Shared Page

Enterprise Explorer

- User administrator
- Role Administrator
- Show Find
- Show Toolbar
- Assets
- Functional Facility
- Document Types
- 3D Models
  - CX3
    - CX3\_PhotoNAV
    - DP
    - DP Survey Navigation
    - DP Survey Photographs
    - DP Survey Photographs v

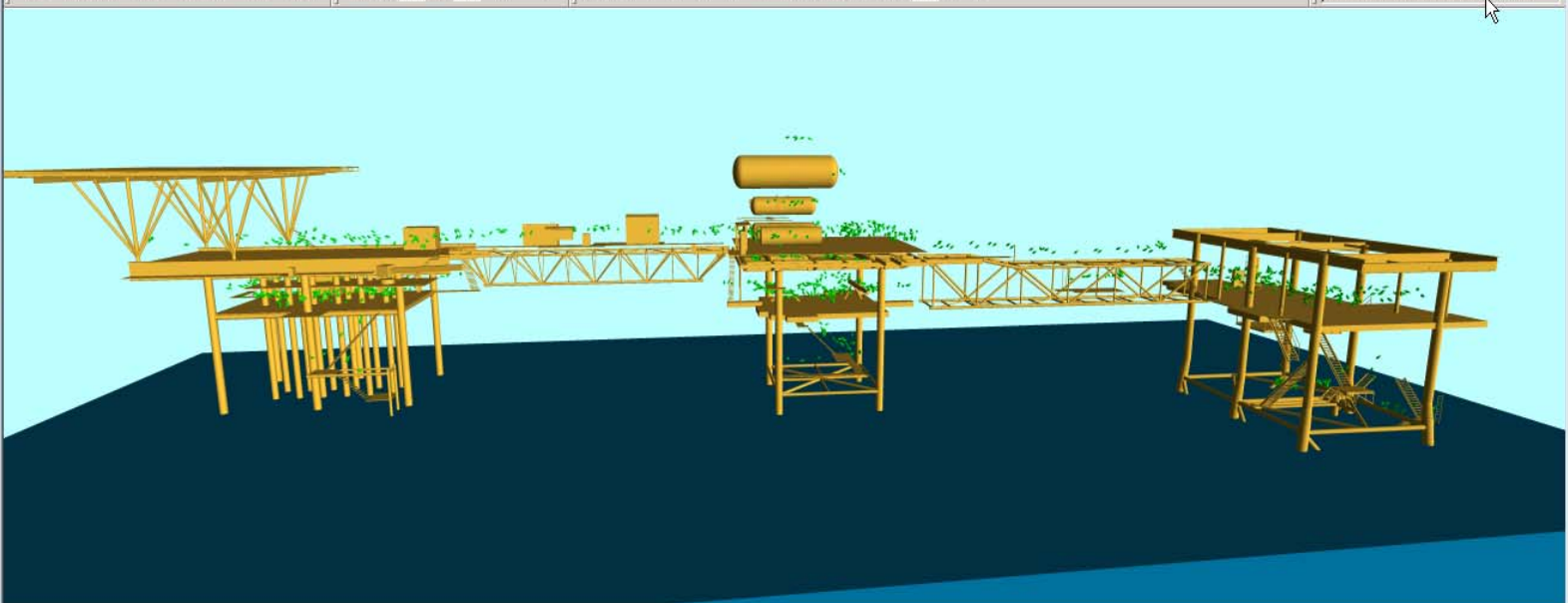
Content Viewer

CX3\_PhotoNAV.zgl

Edit Navigate View Markup Tools Help



Click and drag to orbit about center.



Content Explorer

3D Model CX3\_PhotoNAV

Revisions:

Revision	Notes	Properties
???		



Modify Shared Page

Enterprise Explorer

User administrator  
Role Administrator

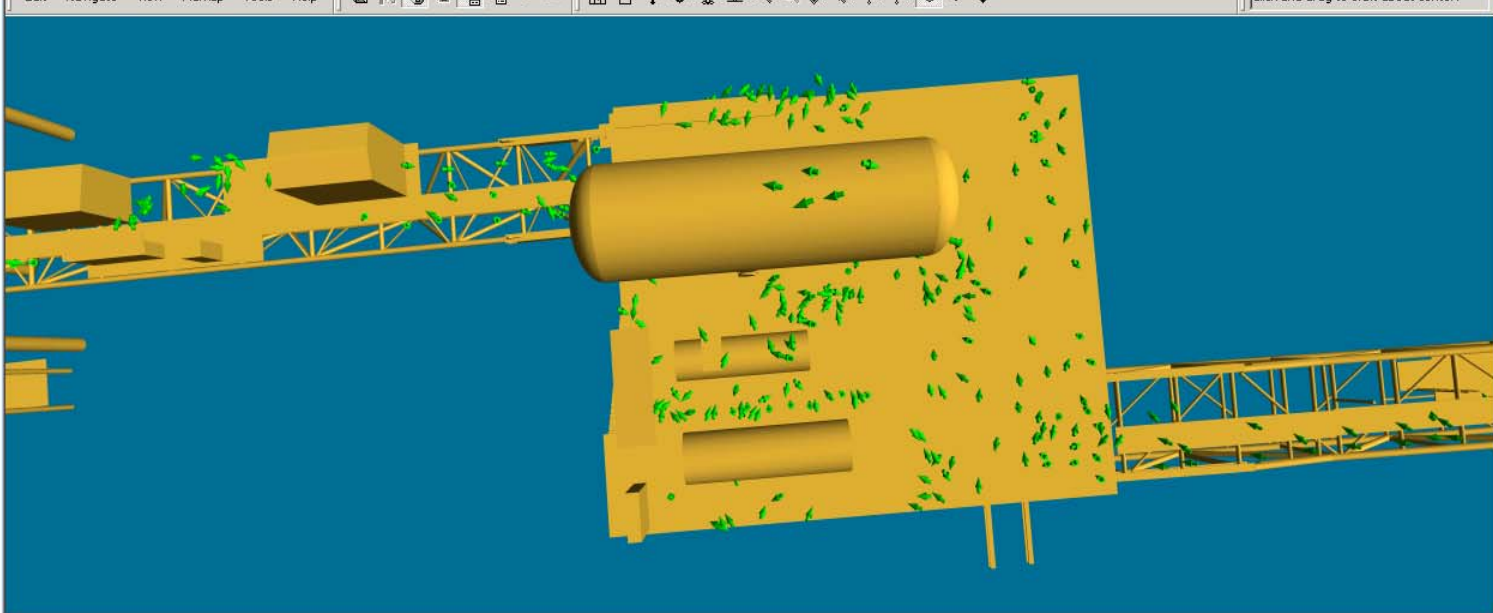
Show Find Show Toolbar

- SWS
- CX3
  - Assets
  - Functional Facility
  - Document Types
  - 3D Models
    - CX3
    - CX3\_PhotoNAV
    - DP
    - DP Survey Navigation

Content Viewer

CX3\_PhotoNAV.zgl

Edit Navigate View Markup Tools Help



Content Explorer

3D Model CX3\_PhotoNAV

Revisions:

Revision	Notes	Properties
???		

VNET - Microsoft Internet Explorer

File Edit View Favorites Tools Help

Back Forward Stop Home Search Favorites

Address <http://v2/VNET/Shared%20Documents/VNETPortal.aspx> Go Links

Home Documents and Lists Create Site Settings Help Up to Team Web Site



Offset Services Ltd  
AVEVA.Net Portal

Modify Shared Page

**Enterprise Explorer**

User administrator  
Role Administrator

Show Find Show Toolbar

- SWS
- CX3
  - Assets
  - Functional Facility
  - Document Types
  - 3D Models
    - CX3
    - CX3\_PhotoNAV
    - DP
    - DP Survey Navigation

**Content Viewer**

CX3.zgl PP-EQ-0169-Index.mht CX32082L.svg



**Content Explorer**

Southward Photograph CX32082L{}

Revisions:

Revision	Notes	Properties
???		

Enterprise Explorer

User administrator

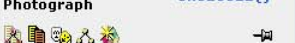
Role Administrator

Show Find Show Toolbar

- SWS
- CX3
  - Assets
  - Functional Facility
  - Document Types
    - 3D Models
      - CX3
      - CX3\_PhotoNAV
      - DP
      - DP Survey Navigation

Content Explorer

Southward Photograph CX32082L{}



Revisions:

Revision	Notes	Properties
???		

Content Viewer

CX3.zgl PP-EQ-0169-Index.mht CX32082L.svg



**Enterprise Explorer**

User administrator  
Role Administrator

Show Find Show Toolbar

- CX3
  - Assets
  - Functional Facility
  - Document Types
    - 3D Models
      - CX3
      - CX3\_PhotoNAV
      - DP
      - DP Survey Navigation
      - DP Survey Photographs

**Content Viewer**

CX3.zgl PP-EQ-0169-Index.mht CX32082L.svg



**Content Explorer**

**Equipment** EQ-0169

Documents:

- 3D Models - (3)
- Data Sheets - (1)
- Datasets - (1)
- P&IDs - (7)
- Performance Curves - (1)
- Photographs - (53)

Enterprise Explorer

User administrator  
Role Administrator

Show Find Show Toolbar

- CX3
  - Assets
  - Functional Facility
  - Document Types
    - 3D Models
      - CX3
      - CX3\_PhotoNAV
      - DP
      - DP Survey Navigation
      - DP Survey Photographs

Content Explorer

- Data Sheets - (1)
- Datasets - (1)
- P&IDs - (7)
- Performance Curves - (1)
- Photographs - (53)
  - Downward Photographs - (1)
  - Eastward Photographs - (12)
  - Index Photographs - (1)
    - PP-EQ-0169-Index
  - Northward Photographs - (2)
  - Photopairs - (26)
  - Southward Photographs - (6)

Content Viewer

CX3.zgl PP-EQ-0169-Index.mht CX32082L.svg





Modify Shared Page

**Enterprise Explorer**

User administrator  
Role Administrator

Show Find Show Toolbar

- SWS
- CX3
  - Assets
  - Functional Facility
  - Document Types
  - 3D Models
    - CX3
    - CX3\_PhotoNAV
    - DP
    - DP Survey Navigation

**Content Viewer**

CX3.zgl PP-EQ-0169-Index.mht

Northward Photographs



[CX32244L \(6.0%\)](#)



[CX32217L \(2.0%\)](#)

Eastward Photographs



[CX32229L \(44.4%\)](#)



[CX32220L \(42.0%\)](#)



[CX32223L \(9.3%\)](#)



[CX32277L \(3.4%\)](#)



[CX32307L \(3.2%\)](#)



**Content Explorer**

Index Photograph PP-EQ-0169-Index

Revisions:

Revision	Notes	Properties
???		



**Offset** Offset Services Ltd  
AVEVA.Net Portal

Modify Shared Page

**Enterprise Explorer**  
User administrator  
Role Administrator  
Show Find Show Toolbar  
CX3  
Assets  
Functional Facility  
Document Types  
3D Models  
CX3  
CX3\_PhotoNAV  
DP  
DP Survey Navigation  
DP Survey Photographs

**Content Viewer**  
CX3.zgl PP-EQ-0169-Index.mht



**Westward Photographs**



**Downward Photograph**

VNET - Microsoft Internet Explorer

File Edit View Favorites Tools Help

Back Forward Stop Home Search Favorites

Address <http://v2/VNET/Shared%20Documents/VNETPortal.aspx> Go Links

Home Documents and Lists Create Site Settings Help Up to Team Web Site



Offset Services Ltd  
AVEVA.Net Portal

Modify Shared Page

**Enterprise Explorer**

User administrator  
Role Administrator

Show Find Show Toolbar

- SWS
- CX3
  - Assets
  - Functional Facility
  - Document Types
  - 3D Models
    - CX3
    - CX3\_PhotoNAV
    - DP
    - DP Survey Navigation

**Content Viewer**

CX3.zgl PP-EQ-0169-Index.mht CX32082L.svg



**Content Explorer**

Southward Photograph CX32082L{}

Revisions:

Revision	Notes	Properties
???		



Modify Shared Page

Enterprise Explorer

- User administrator
- Role Administrator
- Show Find Show Toolbar
- SWS
- CX3
  - Assets
  - Functional Facility
  - Document Types
  - 3D Models
    - CX3
    - CX3\_PhotoNAV
    - DP
    - DP Survey Navigation

Content Explorer

- Equipment EQ-0169
- Documents:
  - 3D Models - (3)
  - Data Sheets - (1)
  - Datasets - (1)
  - P&IDs - (7)
  - Performance Curves - (1)
  - Photographs - (53)

Content Viewer

CX3.zgl PP-EQ-0170-Index.mht PP-EQ-0169-Index.mht CX32082L.svg





Modify Shared Page

Enterprise Explorer

- User administrator
- Role Administrator
- Show Find Show Toolbar
- CX3
  - Assets
  - Functional Facility
  - Document Types
    - 3D Models
      - CX3\_PhotoNAV
      - DP
      - DP Survey Navigation
      - DP Survey Photographs

Content Viewer

CX3.zgl PP-EQ-0169-Index.mht CX32082L.svg



Content Explorer

- Data Sheets - (1)
- Datasets - (1)
- P&IDs - (7)
- Performance Curves - (1)
- Photographs - (53)
  - Downward Photographs - (1)
  - Eastward Photographs - (12)
  - Index Photographs - (1)
    - PP-EQ-0169-Index
  - Northward Photographs - (2)
  - Photopairs - (26)
  - Southward Photographs - (6)



Enterprise Explorer

User administrator  
Role Administrator

Show Find Show Toolbar

- SWS
- CX3
  - Assets
  - Functional Facility
  - Document Types
  - 3D Models
    - CX3
    - CX3\_PhotoNAV
    - DP
    - DP Survey Navigation

Content Viewer

CX3.zgl PP-EQ-0170-Index.mht PP-EQ-0169-Index.mht CX32082L.svg CX32082 URL

**Point** Distance

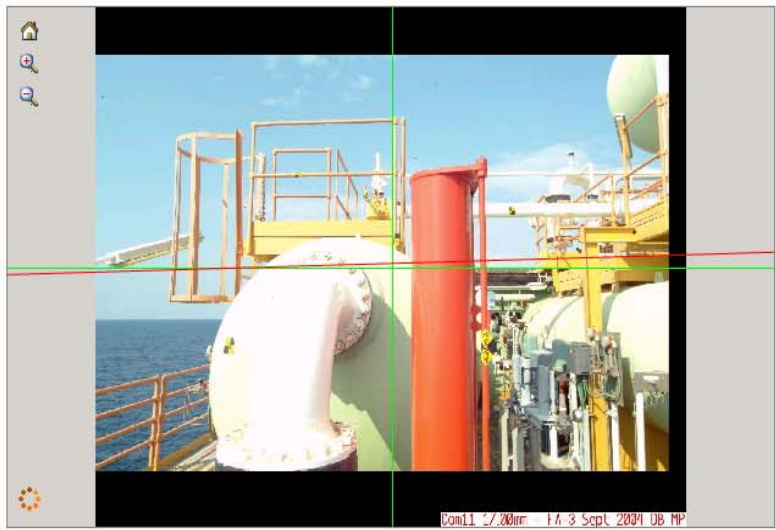
**Position:** E 24560.97 N 76268.81 U 77058.87 Confidence: 1.34

Content Explorer

Photopair CX32082 {}

Revisions:

Revision	Notes	Properties
???		



# Offset Services Ltd AVEVA.Net Portal

Modify Shared Page

## Enterprise Explorer

User administrator  
Role Administrator

Show Find Show Toolbar

- SWS
- CX3
  - Assets
  - Functional Facility
  - Document Types
    - 3D Models
      - CX3\_PhotoNAV
      - DP
      - DP Survey Navigation

## Content Explorer

Photopair CX32082 {}

Revisions:

Revision	Notes	Properties
???		

## Content Viewer

CX3.zgl PP-EQ-0170-Index.mht PP-EQ-0169-Index.mht CX32082L.svg CX32082 URL

Point Distance

Position: E: 24560.97 N: 76268.81 U: 77058.87 Confidence: 1.34



### Enterprise Explorer

User woprh5  
Role VNET User  
Hide Find Show Toolbar  
Any type  
2KT1420 Find Mode: By ID  
KGP  
KBS  
Public Folders  
Personal Folder  
Search Results  
2KT1420  
Battery - (1)  
Bottle - (1)  
Burner - (1)  
Exchanger - (3)  
Fan - (2)  
Filter - (6)

### Content Explorer

Turbine, Gas 2KT1420  
TURBINE, DRIVER FOR 2KT1420  
Documents:  
DRIMS Documents - (533)  
Datashets - (3)  
Drawings - (422)  
Lists & Registers - (9)  
Manuals & Guidelines - (40)  
Reports, Reviews, Studies, File No  
Vendor Documents, Manuals - (1)  
Vendor Drawings - (57)  
Intelligent P&IDs - (4)  
Train 2 - (4)  
2KT1420 VPE Eng Data  
Turbine - (1)  
Turbine, Gas - (1)  
AU01.2KT1420 SAP Link

### Content Viewer

Home Page

## Media Gallery

#### 2009 Major Shutdown



HP Rotor Overview



LP Blade Section

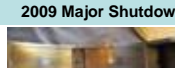
#### 2009 Major Shutdown



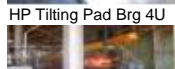
Active Thrust Pad Brg



Thrust Pad Normal v1



HP Tilting Pad Brg 4U



Lifting Beam Install

#### Tag: 2KT1420



Stage 1-4 HP Blades



LP Stator Blades



Thrust Pad T/C's 4Brg



Thrust Pad Normal v2



HP Tilting Pad Brg 4L



Scaffolding Arrangement



Guide Van Pins



LP Rotor Section



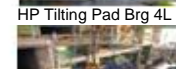
Thrust Ring Assy



Half Moon Thrust Pad



HP Tilting Pad Brg 4L



Enclosure Scaffolding



HP Rotor - N D E



LP Rotor in Situ



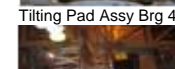
Thrust Pad Hot Spot1



Thrust Pad Carrier



Tilting Pad Assy Brg 4



Enclosure Scaffolding



Stage 5-11 HP Blades



LP Rotor Shaft & Brg



Thrust Pad Hot Spot2



Thrust Pad Shoes



Scaffolding Arrangement



HP Stators Topside



- Got a problem or issue with ALIS? Contact the [ITHelpDesk](#) for assistance: x84444.
- Need help using ALIS, or want to find out what ALIS can do? See the [ALIS Help Page](#) for videos, how-to's and quick reference guides.
- Something wrong with the info in ALIS, or can't find info that should be in ALIS? Contact the [ALIS Information Custodian](#) to report it.
- See the [Production Division Homepage](#) for more information about Woodside's facilities & other information systems.

The background of the slide is a high-angle, blue-tinted photograph of an industrial facility, likely a refinery or chemical plant. It features a complex network of pipes, walkways, and large cylindrical storage tanks. The lighting is bright, creating strong highlights and shadows across the structures.

*Offset*

Offset Services Limited

**Thank you**

A smaller version of the 'Offset' logo, featuring the word 'Offset' in a red, cursive script font on a white background with horizontal lines.

*Offset*

Offset Services Limited