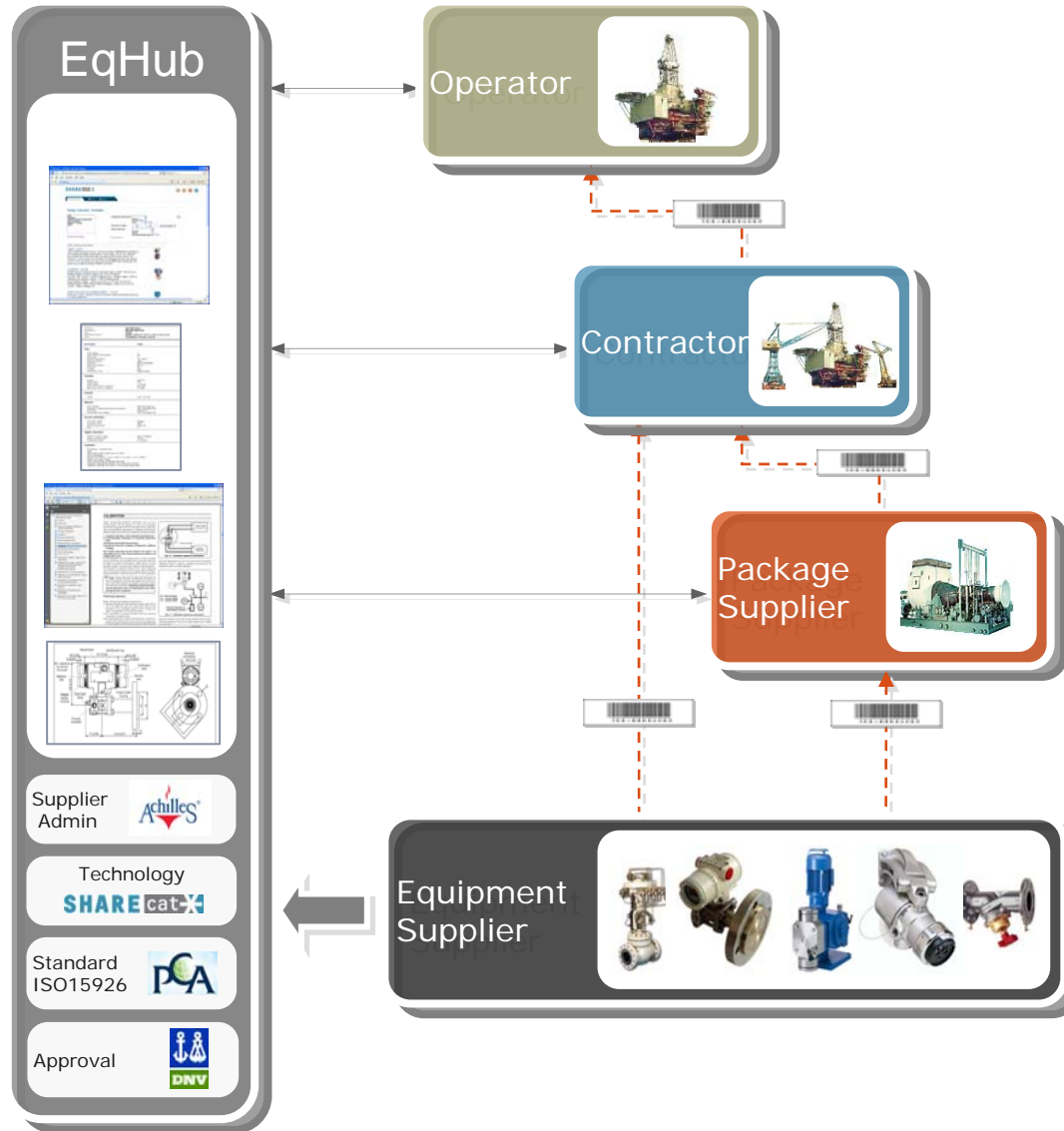
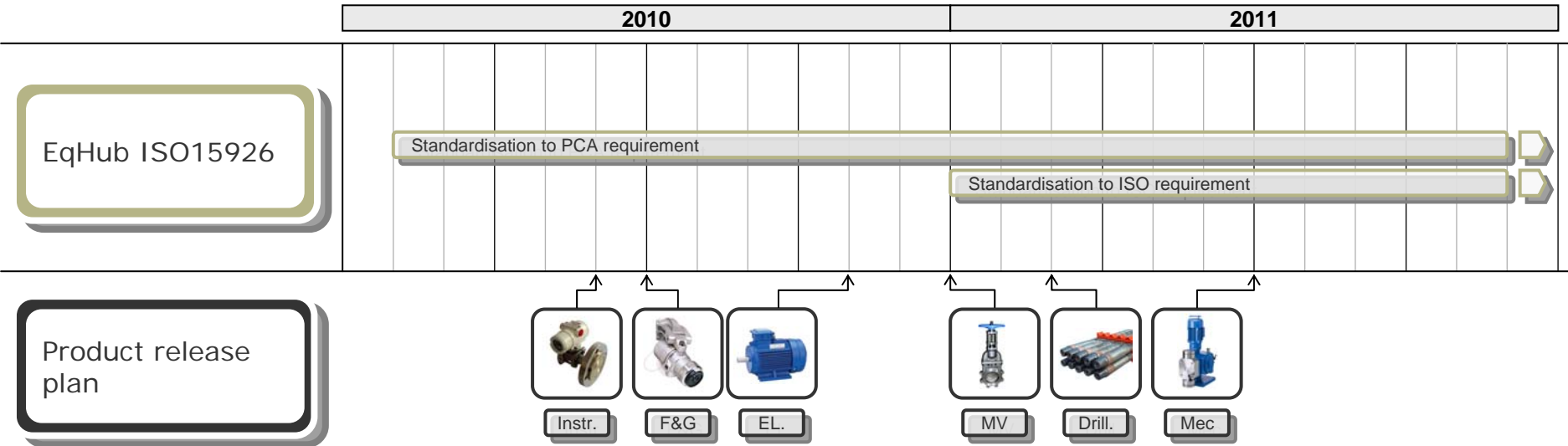


- What is EqHub
- Target
- Definition of Scope
- Process
- Status and Plans
- Live Demo







The original plan was to :

- Cover data and document requirements for 80% of Tag
- Role out by discipline, starting with Instrumentation

This changed to :

- Cover data and document requirements for 80% of Tag
- 1st of July

To define the scope we :

- Analyzed data from *Ormen Lange* and *Skarv*
- Found Equipment classes Covering more than 80% of Tag

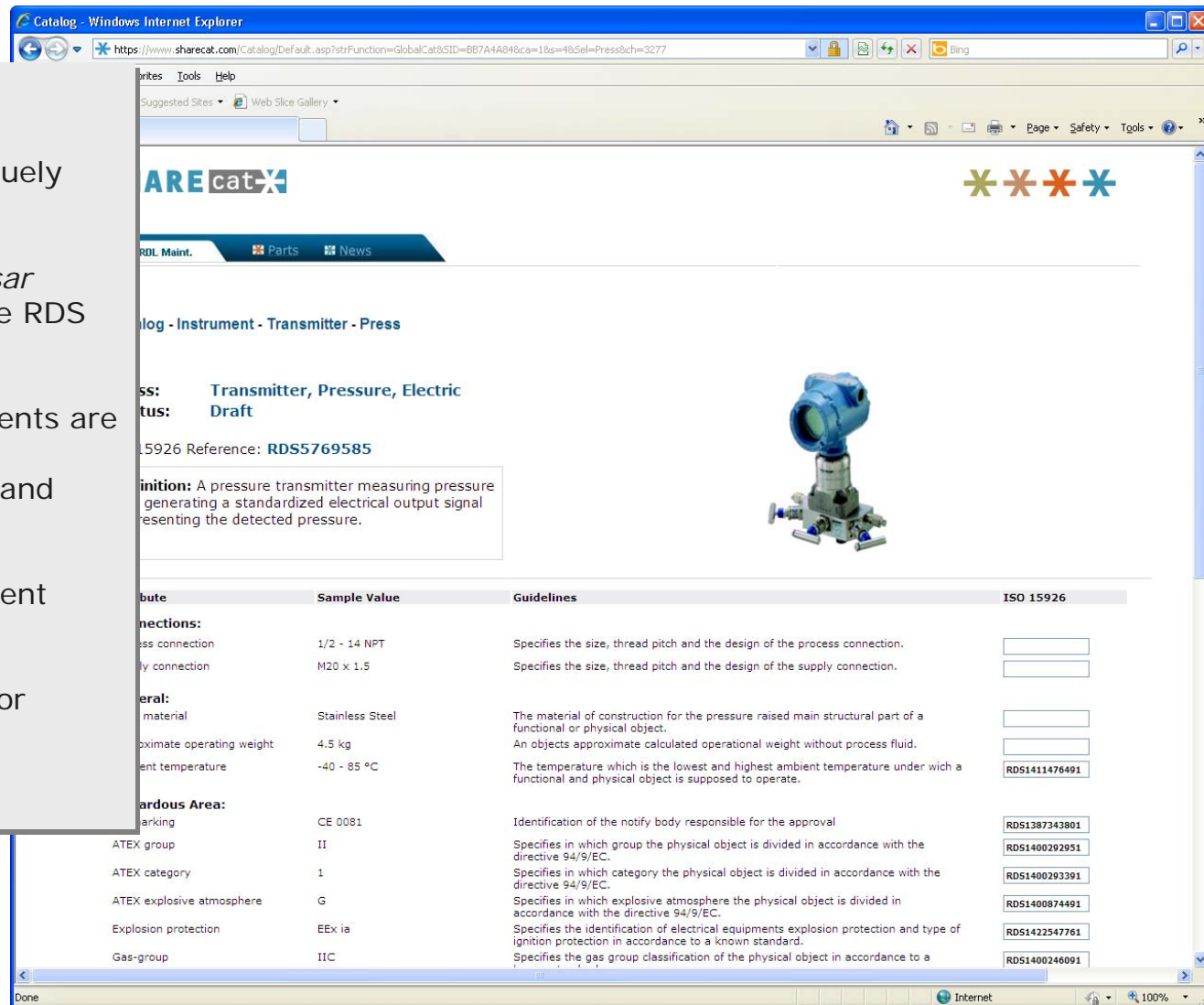


Prioritised Scope of Classes to be standardised

		113		73878
ClassId	Class	Priority	Discipline Code	Sum Tag
2	Accelerometer	1	I	104
1498	Actuator, Electric	1	I	27
1499	Actuator, Hydraulic	1	I	49
5240	Actuator, Hydraulic, Piston	1	I	42
1500	Actuator, Pneumatic	1	I	29
3211	Actuator, Pneumatic, Diaphragm	1	I	253
3212	Actuator, Pneumatic, Piston	1	I	616
7	Amplifier	1	I	41
9	Anode	1	M	190
1508	Antenna, UHF	1	T	30
1509	Antenna, VHF	1	T	35
1540	Bottle, Nitrogen	1	M	222
1542	Box, Control	1	E	555
1544	Box, Junction	1	E	248
3424	Box, Junction, Ex	1	E	5923
1557	Button, Push	1	I	515
1558	Cable, Heat trace	1	E	119
2307	Camera, Video	1	I	91

Class by Class :

- Check that attributes is uniquely defined (ISO15926 ready)
- Add Guidelines
- Feed attributes to *Posc Caesar*
- Receive, approve and update RDS codes from *Posc Caesar*
- Check that *Norsok* requirements are covered (datasheet)
- Go through other attributes and check validity
- Validate document requirement
- Set Status to Draft
- Feed class to Work Groups for approval



ARE cat

RD. Maint. Parts News

atalog - Instrument - Transmitter - Press

ss: **Transmitter, Pressure, Electric**
tus: **Draft**

15926 Reference: **RDS5769585**

inition: A pressure transmitter measuring pressure generating a standardized electrical output signal representing the detected pressure.

Attribute	Sample Value	Guidelines	ISO 15926
Connections:			
Process connection	1/2 - 14 NPT	Specifies the size, thread pitch and the design of the process connection.	<input type="text"/>
Supply connection	M20 x 1.5	Specifies the size, thread pitch and the design of the supply connection.	<input type="text"/>
Material:			
Material	Stainless Steel	The material of construction for the pressure raised main structural part of a functional or physical object.	<input type="text"/>
Approximate operating weight	4.5 kg	An objects approximate calculated operational weight without process fluid.	<input type="text"/>
Operating temperature	-40 - 85 °C	The temperature which is the lowest and highest ambient temperature under which a functional and physical object is supposed to operate.	RDS1411476491
Hazardous Area:			
Marking	CE 0081	Identification of the notify body responsible for the approval	RDS1387343801
ATEX group	II	Specifies in which group the physical object is divided in accordance with the directive 94/9/EC.	RDS1400292951
ATEX category	1	Specifies in which category the physical object is divided in accordance with the directive 94/9/EC.	RDS1400293391
ATEX explosive atmosphere	G	Specifies in which explosive atmosphere the physical object is divided in accordance with the directive 94/9/EC.	RDS1400874491
Explosion protection	EEx ia	Specifies the identification of electrical equipments explosion protection and type of ignition protection in accordance to a known standard.	RDS1422547761
Gas-group	IIC	Specifies the gas group classification of the physical object in accordance to a	RDS1400246091



Prioritised Scope of Classes to be standardised

113					73878				
ClassId	Class	Priority	Discipline Code	Sum Tag					
2	Accelerometer	1	I	104					
1498	Actuator, Electric	1	I	27					
1499	Actuator, Hydraulic	1	I	49					
	Actuator, Hydraulic, Piston	1	I	42					
1500	Actuator, Pneumatic	1	I	29					
	Actuator, Pneumatic, Diaphragm	1	I	253					
	Actuator, Pneumatic, Piston	1	I	616					
7	Amplifier	1	I	41					
9	Anode	1	M	190					
1508	Antenna, UHF	1	T	30					
1509	Antenna, VHF	1	T	35					
1540	Bottle, Nitrogen	1	M	222					
1542	Box, Control	1	E	555					
1544	Box, Junction	1	E	248					
3424	Box, Junction, Ex	1	E	5923					
1557	Button, Push	1	I	515					
1558	Cable, Heat trace	1	E	119					
2307	Camera, Video	1	I	91					
486	Cleaning Kit	1	S	79					
	Connector, Cable	1	E	711					
1625	Controller, Pneumatic	1	I	27					
	Controller, Programmable	1	I	333					
1659	Damper, Pulsation	1	M	36					
1662	Detector, Flame	1	F&G	811					
1663	Detector, Gas	1	F&G	1161					

65543



104 x

27 x

49 x

42 x

29 x

253 x

616 x

248 x

5923 x

515 x

711 x

333 x

811 x

1161 x

- 56 classes in draft
- Representing 65.543 out of 73.878 tag

- 49 classes in work
- Representing 8.335 out of 73.878 tag

- Plan to finalize all classes in scope by 1st of July

replaced by Actuator, Hydraulic

replaced by Actuator, Pneumatic

replaced by Actuator, Pneumatic

Replaced by Plug, Electric, Low Vi

replaced by Positioner

